

59076	Designatronics, Inc. Stock Drive Products Division 55 S. Denton Avenue New Hyde Park, NY 11040	63312	Endicott Research Group, Inc. 2601 Wayne Street P.O. Box 269 Endicott, NY 13760	72819	Carborundum Company The Electrical Products Division Globar Plant 3425 Hyde Park Blvd. P.O. Box 339 Niagara Falls, NY 14302
59730	Thomas and Betts Corporation HWY 218 S. Iowa City, IA 52240	70485	Atlantic India Rubber Works, Inc. 571 W. Polk Street Chicago, IL 60607	72835	Gochenaur Marine Company Philadelphia, PA
59950	Shielding Technology, Inc. Subsidiary of Chomerics, Inc. 120 Ethel Road W. Piscataway, NJ 08854	70494	Emhart Industries, Inc. Hardware Division 225 Episcopal Road Berlin, CT 06037	72962	Amerace Corporation Esna Division 2330 Vauxhall Road Union, NJ 07083
59993	International Rectifier Semiconductor Division 233 Kansas Street El Segundo, CA 90245	70903	Belden Corporation Subsidiary of Cooper Industries, Inc. 2000 S. Batavia Avenue Geneva, IL 60134	72982	Murata Erie North America, Inc. Erie Operations 645 W. 11th Street Erie, PA 16512
60705	Cera-Mite Corporation 1327 6th Avenue Grafton, WI 53024	70983	Bethlehem Steel Corporation Shipbuilding Department Room 1000 Martin Tower Bethlehem, PA 18016	73138	Beckman Instruments, Inc. Beckman Electronic Technologies Subsidiary of Smith Kline/Beckman Corporation 2500 Harbor Blvd. Fullerton, CA 92634
60963	Niagara Straw Company, Inc. 72 Lakeview Avenue Buffalo, NY 14201	71041	Incom International, Inc. Boston Gear Division, Inc. 14 Hayward Street Quincy, MA 02171	73734	Federal Screw Products, Inc. 3917 N. Kedzie Avenue Chicago, IL 60618
61306	Silvered Electronic Mica Company, Inc. RT 6 Willimantic, CT 06226	71279	Midland-Ross Corporation Cambion Division One Alewife Place Cambridge, MA 02140	73899	JFD Electronic Components A Division of Murata Erie North America 112 Mott Street Oceanside, NY 11572
61429	Fox Electronics Fox Enterprises, Inc. P.O. Box 1078 Cape Coral, FL 33910	71400	Bussmann Division of McGraw-Edison Company 114 Old State Road P.O. Box 14460 St. Louis, MO 63178	73905	ITT Jennings 970 McLaughlin Avenue San Jose, CA 95116
61463	Uniroyal, Inc. Oxford Management and Research Center Benson Road Middlebury, CT 06749	71450	CTS Corporation 905 N. West Blvd. Elkhart, IN 46514	73988	The Harrington And King Perforating Company, Inc. 5655 Fillmore Street Chicago, IL 60644
61529	Aromat Corporation 250 Sheffield Street Mountainside, NJ 07092	71468	ITT Cannon Electric Division of International Telephone and Telegraph Corporation 10550 Talbert Avenue P.O. Box 8040 Fountain Valley, CA 92708	74199	Quam Nichols Company 218 E. Marquette Road Chicago, IL 60637
61587	Hughes Electronic Devices Corporation 13321 Grass Valley Avenue P.O. Box 185 Grass Valley, CA 95945	71785	TRW, Inc. TRW Cinch Connectors Division 1501 Morse Avenue Elk Grove Village, IL 60007	74276	General Instrument Corporation Lamp Division/Worldwide 4433 N. Ravenswood Avenue Chicago, IL 60640
61725	ITT Components Division International Telephone and Telegraph Corporation 3201 S. Standard Street P.O. Box 2197 Santa Ana, CA 92707	71895	Delavan Corporation 811 Fourth Street P.O. Box 100 West Des Moines, IA 50265	74840	Illinois Capacitor, Inc. 3757 W. Touhy Avenue Lincolnwood, IL 60645
61735	Pulse Engineering, Inc. 5004 Lehigh Road College Park, MD 20740	72136	Electro Motive Corporation Subsidiary of International Electronics Corporation Florence, SC	74868	Amphenol RF Operations An Allied Company 33 E. Franklin Street Danbury, CT 06810
61802	Toshiba Internation Industrial Division 13131 W. Little York Road P.O. Box 40906 Houston, TX 77041	72619	Dialight Division Amperex Electronic Corporation 203 Harrison Place Brooklyn, NY 11237	74970	Johnson EF Company 299 10th Avenue SW Waseca, MN 56093
61957	USM Corporation Subsidiary of Emhart Industries, Inc. 140 Federal Street Boston, MA 02107	72634	Dielectric Products Company, Inc. Jersey City, NJ	75042	TRW, Inc. TRW Electronic Components IRC Fixed Resistors Philadelphia Division 401 N. Broad Street Philadelphia, PA 19108
62703	Varo Semiconductor, Inc. Subsidiary of Varo, Inc. 1000 N. Shiloh Road P.O. Box 40676 Garland, TX 75040	72794	Dzus Fastener Company, Inc. 42S Union Blvd. West Islip, NY 11795	75263	Keystone Carbon Company 1935 State Street St. Marys, PA 15857

T.O. 31R2-2URC-123

75378	CTS Knights, Inc. 400 Reimann Avenue Sandwich, IL 60548	80045	Cincinnati Electronics Corporation Subsidiary of GEC, Inc. An English Electric Corporation Company 2630 Glendale-Milford Road Cincinnati, OH 45241	83325	SNC Manufacturing Company, Inc. 101 Waukau Road Oshkosh, WI 54901
75382	Kulka Electric Corporation A North American Philips Corporation Mt. Vernon, NY	80063	U.S. Army Communications And Electronics Materiel Readiness Command Logistics Engineering Directorate Fort Monmouth, NJ 07703	83330	Kulka Smith, Inc. A North American Philips Company 1913 Atlantic Avenue Manasquan, NJ 08736
75915	Tracor Littelfuse, Inc. 800 E. Northwest HWY Des Plaines, IL 60016	80101	General Electronics, Inc. Paterson, NJ	84830	Lee Spring Company, Inc. 1462 62nd Street Brooklyn, NY 11219
76301	McDonnell Douglas Corporation McDonnell Aircraft Company P.O. Box 516 St. Louis, MO 63166	80103	Veeco Instruments, Inc. Lambda Electronics Division 515 Broad Hollow Road Melville, NY 11747	86797	Rogan Corporation 3455 Woodhead Drive Northbrook, IL 60062
76385	Minor Rubber Company, Inc. 49 Ackerman Street Bloomfield, NJ 07003	80294	Bourms Instruments, Inc. 135 Magnolia Avenue Riverside, CA 92506	86928	Seastrom Manufacturing Company, Inc. 701 Sonora Avenue Glendale, CA 91201
76490	Moto Meter Gauge and Equipment Division Electric Auto Lite Company New York, NY	80372	Marine Corps. Navy Annex Washington, DC 20380	89032	Eaton Corporation Engineered Fasteners Division 8700 Brookpark Road P.O. Box 6688 Cleveland, OH 44101
77264	Phoenix Specialty Manufacturing Company, Inc. 971 Stewart Avenue Garden City, LI, NY 11530	81073	Grayhill, Inc. 561 Hillgrove Avenue P.O. Box 10373 La Grange, IL 60525	89110	AMP, Inc. Capitron Division 1595 S. Mt. Joy Street Elizabethtown, PA 17022
77342	AMF, Inc. Potter and Brumfield Division 200 Richland Creek Drive Princeton, IN 47671	81095	Triad-Utrad Division Litton Systems, Inc. National City, CA	89265	AMF, Inc. Potter and Brumfield Division 200 Richland Creek Drive Princeton, IN 47671
77347	Poulsen and Wardon, Inc. Los Angeles, CA	81249	Library Efficiency Corporation New York, NY	90372	Wakefield Engineering Company P.O. Box 818 Coeur D Alene, ID 83814
77609	RCA Corporation RCA Service Company RTE 38 Cherry Hill, NJ 08358	81349	Mil Spec	91506	Augat, Inc. 33 Perry Avenue P.O. Box 799 Attleboro, MA 02703
77820	Allied Amphenol Products Bendix Connector Operations 40-60 Delaware Street Sidney, NY 13838	81483	International Rectifier 9220 Sunset Blvd. Los Angeles, CA 90069	91836	Kings Electronics Company, Inc. 40 Marbledale Road Tuckahoe, NY 10707
78488	The Stackpole Corporation 201 Stackpole Street St. Marys, PA 15857	81564	Artted Company, Inc. 50 Warehouse Street Springfield, MA 01118	91929	Honeywell, Inc. Micro Switch Division 11 W. Spring Street Freeport, IL 61032
79061	Vaco Products Company 1510 Skokie Blvd. Northbrook, IL 60062	81814	Zierick Manufacturing Company Radio Circle Mt. Kisco, NY 10549	92891	Alliance Engineering, Inc. Alliance, OH
79136	Waldes Kohinoor, Inc 47-16 Austel Place Long Island City, NY 11101	82389	Switchcraft, Inc. Subsidiary of Raytheon Company 5555 N. Elston Avenue Chicago, IL 60630	92967	Hutchens Industries, Inc. 215 N. Patterson Avenue P.O. Box 1427 SSS Springfield, MO 65805
79218	Waterous Company 300 John E. Carroll Avenue E. South St. Paul, MN 55075	82415	Airpax Corporation Frederick Division A North American Philips Company Husky Park P.O. Box 500 Frederick, MD 21701	93958	Republic Electronics Corporation 176 E. 7th Street Paterson, NJ 07524
79963	Zierick Manufacturing Company Radio Circle Mt. Kisco, NY 10549	82877	Rotron, Inc. Custom Division 7 Hasbrouck Lane Woodstock, NY 12498	94033	Lapointe Industries, Inc. Electronic Products Division 155 W. Main Street Rockville, CT 06066
80009	Tektronix, Inc. 4900 SW Griffith Drive P.O. Box 500 Beaverton, OR 97077	83014	Hartwell Corporation 900 S. Richfield Road Placentia, CA 92670	94117	Sanders Associates, Inc. Daniel Webster HWY South Nashua, NH 03061
80031	Mepco/Electra, Inc. 22 Columbia Road Morristown, NJ 07960	83079	Amerace Corporation Buchanan Crimptool Products Division 1065 Floral Avenue Union, NJ 07083	94222	Southco, Inc. 210 N. Brinton Lake Road Concordville, PA 19331

94464	Masstech Corporation Subsidiary of Transtechnology Corporation Swamp Road RT 313 P.O. Box 2001 Doylestown, PA 18901	99256	PEM Engineering Company Los Angeles, CA		AMP, Inc. 2800 Fulling Mill P.O. Box 3608 Harrisburg, PA 17105	00779
94696	Magnecraft Electric Company 5575 N. Lynch Avenue Chicago, IL 60630	99313	Varian Associates, Inc. Microwave Tube Division 611 Hansen Way Palo Alto, CA 94303		Amperex Electronic Corporation Component Division Hauppauge, NY	34553
95146	Alco Electronic Products, Inc. 1551 Osgood Street North Andover, MA 01845		NAME AND ADDRESS	FSCM	Amperex Electronic Corporation Ferroxcube Division 5083 Kings HWY Saugerties, NY 12477	02114
95275	Vitram, Inc. Box 544 Bridgeport, CT 06601		Acme Electric Corporation Cuba, NY	00159	Amperex Electronic Corporation Semiconductor Solid State and Active Devices-Electro Optical Devices Providence Pike Slatersville, RI 02876	25403
95987	WH Brady Company 727 W. Glendale Avenue Milwaukee, WI 53209		Advanced Micro Devices 901 Thompson Place Sunnyvale, CA 94086	34335	Amphenol RF Operations An Allied Company 33 E. Franklin Street Danbury, CT 06810	74868
96214	Texas Instruments, Inc. Equipment Group 13500 N. Central EXPY P.O. Box 660246 M/S 3137 Dallas, TX 75266		Aham, Inc. 27901 Front Street Rancho California, CA 92390	53894	Aromat Corporation 250 Sheffield Street Mountainside, NJ 07092	61529
96238	Dataproducs New England, Inc. Barnes Park North Wallingford, CT 06492		Airpax Corporation Frederick Division A North American Phillips Company Husky Park P.O. Box 500 Frederick, MD 21701	82415	Arrow Hart Canada LTD Scarborough, Ontario Canada M8Z 2R4	07858
96804	Bell Industries, Inc. JW Miller Division 19070 Reyes Avenue P.O. Box 5825 Compton, CA 90224		Alberox Corporation New Bedford, MA	57074	Arited Company, Inc. 50 Warehouse Street Springfield, MA 01118	81564
96906	Mil Spec		Alco Electronic Products, Inc. 1551 Osgood Street North Andover, MA 01845	95146	Atlantic India Rubber Works, Inc. 571 W. Polk Street Chicago, IL 60607	70485
97520	Basler Electric Company RT 143 P.O. Box 269 Highland, IL 62249		Alden Products Company 117 N. Main Street P.O. Box 860 Brockton, MA 02403	01009	Augat, Inc. 33 Perry Avenue P.O. Box 799 Attleboro, MA 02703	91506
97942	Westinghouse Electric Corporation Defense and Electronic Systems Center Baltimore-Washington Airport P.O. Box 1897 MS 984 Baltimore, MD 21203		Alliance Engineering, Inc. Alliance, OH	92891	AVX Ceramics Division of AVX Corporation 19th Avenue South P.O. Box 867 Myrtle Beach, SC 29577	04222
98003	Nielsen Hardware Corporation 770 Wethersfield Avenue P.O. Box 568 Hartford, CT 06141		Allied Amphenol Products Bendix Connector Operations 40-60 Delaware Street Sidney, NY 13838	77820	Basler Electric Company RT 143 P.O. Box 269 Highland, IL 62249	97520
98291	Seaelectro Corporation BICC Electronics 40 Lindeman Drive Trumbull, CT 06611		Allied Devices Corporation 2365 Milburn Avenue P.O. Drawer E. Baldwin, NY 11510	29964	Beckman Instruments, Inc. Beckman Electronic Technologies Subsidiary of Smith Kline/Beckman Corporation 2500 Harbor Blvd. Fullerton, CA 92634	73138
98410	ETC-Molex, Inc. Subsidiary of Molex, Inc. 5201 Richmond Road Bedford Heights, OH 44146		Amerace Corporation Esna Division 2330 Vauxhall Road Union, NJ 07083	72962	Belden Corporation Subsidiary of Cooper Industries, Inc. 2000 S. Batavia Avenue Geneva, IL 60134	70903
98734	Hewlett-Packard Company Manufacturing Division Palo Alto, CA		Amerace Corporation Buchanan Crimptool Products Division 1065 Floral Avenue Union, NJ 07083	83079	Bell Industries, Inc. JW Miller Division 19070 Reyes Avenue P.O. Box 5825 Compton, CA 90224	96804
99120	Plastic Capacitors, Inc. 2623 N. Pulaski Road Chicago, IL 60639		American Trans-Coil Corporation 124-06 101st Avenue Richmond Hill, NY 11419	18212	Bergquist Company, Inc., The 5300 Edina Industrial Blvd. Minneapolis, MN 55435	55285
99167	Sundstrand Aviation Operations Unit of Sundstrand Corporation 4747 Harrison Avenue P.O. Box 7002 Rockford, IL 61125		AMF, Inc. Potter and Brumfield Division 200 Richland Creek Drive Princeton, IN 47671	77342		
			AMF, Inc. Potter and Brumfield Division 200 Richland Creek Drive Princeton, IN 47671	89265		
			AMP, Inc. Capitron Division 1595 S. Mt. Joy Street Elizabethtown, PA 17022	89110		

T.O. 31R2-2URC-123

Bestran Corporation Dilectron Division 2669 So. Myrtle Avenue Monrovia, CA 91016	22701	Cardion Electronics Division of General Signal Controls, Inc. A Unit of General Signal Corporation Long Island Expressway Woodbury, NY 11797	12909	Department of Army U.S. Army Missile Command Redstone Arsenal, AL 35809	18876
Bethlehem Steel Corporation Shipbuilding Department Room 1000 Martin Tower Bethlehem, PA 18016	70983	Centratlab, Inc. A North American Philips Company 4561 Colorado Los Angeles, CA 90039	16546	Designatronics, Inc. 55 S. Denton Avenue New Hyde Park, NY 11040	14519
Birtcher Corporation The Industrial Division 4501 N. Arden Drive P.O. Box 4399 El Monte, CA 91734	18915	Cera-Mite Corporation 1327 6th Avenue Grafton, WI 53024	60705	Designatronics, Inc. Stock Drive Products Division 55 S. Denton Avenue New Hyde Park, NY 11040	59076
Blinn Delbert Company, Inc. The 1678 E. Mission Blvd. P.O. Box 2007 Pomona, CA 91769 5065	08289	Cincinnati Electronics Corporation Subsidiary of GEC, Inc. An English Electric Corporation Company 2630 Glendale-Milford Road Cincinnati, OH 45241	80045	Dialight Division Ampere Electronic Corporation 203 Harrison Place Brooklyn, NY 11237	72619
Bourns, Inc. Trimpot Division 1200 Columbia Avenue Riverside, CA 92507	32997	Cornell-Dubilier Electronics 118 E. Jones Street Fuquay-Varina, NC 27526	09023	Dielectric Products Company, Inc. Jersey City, NJ	72634
Bourns, Inc. Precisions/Controls Division 1200 Columbia Avenue Riverside, CA 92507	57921	Cornell-Dubilier Electronics Division of Federal Pacific Electric Company Government Contracts Department 150 Ave L Newark, NJ 07101	14655	Dixie Chemical Company 3635 W. Dallas Street Houston, TX 77019	15969
Bourns, Inc. Precisions/Controls Division 1200 Columbia Avenue Riverside, CA 92507	57922	Corning Glass Works Houghton Park Corning, NY 14830	14674	Du Pont E I De Nemours and Company, Inc. Photo Products Department Berg Electronics Division Route 83 New Cumberland, PA 17070	22526
Bourns, Inc. Networks Division 12155 Magnolia Avenue Riverside, CA 92503	57924	Corning Glass Works 550 High Street Bradford, PA 16701	24546	Dzus Fastener Company, Inc. 425 Union Blvd. West Islip, NY 11795	72794
Bourns Instruments, Inc. 135 Magnolia Avenue Riverside, CA 92506	80294	Crouse-Hinds Arrow Hart Inc. Arrow Hart Division 103 Hawthorn Street Hartford, CT 06105	04009	Eaton Corporation AIL Division Lond Island Plants Commack Road Deer Park, L.I., NY 11729	00752
Breeze-Eastern Corporation Subsidiary of Transtechnology Corporation 700 Liberty Avenue Union, NJ 07083	08484	CSI Capacitors A Division of CSI Technologies, Inc. Del Dios Highway P.O. Box 2052 Escondido, CA 92025	10026	Eaton Corporation Engineered Fasteners Division 8700 Brookpark Road P.O. Box 6688 Cleveland, OH 44101	89032
Bunker Ramo-Eltra Corporation Amphenol Division 2801 S. 25th Avenue Broadview, IL 60153	02660	CTS Corporation 905 N. West Blvd. Elkhart, IN 46514	71450	Electro Motive Corporation Subsidiary of International Electronics Corporation Florence, SC	72136
Russmann Division of McGraw-Edison Company 114 Old State Road P.O. Box 14460 St. Louis, MO 63178	71400	CTS Knights, Inc. 400 Reimann Avenue Sandwich, IL 60548	75378	Electronic Applications Company 4918 Santa Anita Avenue El Monte, CA 91734	21317
C and K Components, Inc. 15 Riverdale Avenue Newton, MA 02158	09353	CTS of Berne, Inc. 406 Parr Road Berne, IN 46711	11236	Electronic Laboratory Supply Company 7208 Germantown Avenue Philadelphia, PA 19119	28482
Cablewave Systems, Inc. 60 Dodge Avenue North Haven, CT 06473	16733	Curt Straub Enterprises 444 W. Ocean Blvd. Suite 1106 Long Beach, CA 90802	50173	Electronic Molding Corporation 96 Mill Street Woonsocket, RI 02895	17117
Caddock Electronics, Inc. 1717 Chicago Avenue Riverside, CA 92507	19647	Dataproducts New England, Inc. Barnes Park North Wallingford, CT 06492	96238	Eltra Corporation Subsidiary of Allied Chemical Company Medwec Division 105 Skyport Drive P.O. Box 417 Scottsbluff, NE 69361	54904
Carborundum Company The Electrical Products Division Globar Plant 3425 Hyde Park Blvd. P.O. Box 339 Niagara Falls, NY 14302	72819	Defense Electronics Supply Center Dayton, OH 45401	14933	Emhart Industries, Inc. Hardware Division 225 Episcopal Road Berlin, CT 06037	70494
		Delavan Corporation 811 Fourth Street P.O. Box 100 West Des Moines, IA 50265	71895	Endicott Research Group, Inc. 2601 Wayne Street P.O. Box 269 Endicott, NY 13760	63312

E-T-A Circuit Breakers 7400 N. Croname Road Chicago, IL 60648	06402	Grayhill, Inc. 561 Hillgrove Avenue P.O. Box 10373 La Grange, IL 60525	81073	Illinois Tool Works, Inc. Paktron Division 900 Follin Lane S.E. Vienna, VA 22180	19396
ETC-Molex, Inc. Subsidiary of Molex, Inc. 5201 Richmond Road Bedford Heights, OH 44146	98410	Harrington And King Perforating Company, Inc., The 5655 Fillmore Street Chicago, IL 60644	73988	Incom International, Inc. Boston Gear Division, Inc. 14 Hayward Street Quincy, MA 02171	71041
Fairchild Camera and Instrument Corporation Semiconductor Division Subsidiary of Schlumberger LTD North American Sales Mail Stop 14-1053 401 Ellis Street P.O. Drawer 7284 Mountain View, CA 94042	07263	Harris Corporation RF Communications Division 1680 University Avenue Rochester, NY 14610	14304	Intel Corporation 3065 Bowers Avenue Santa Clara, CA 95051	34549
Fair-Rite Products Corporation 1 Commercial Row Wallkill, NY 12589	34899	Hartwell Corporation 900 S. Richfield Road Piacentia, CA 92670	83014	International Rectifier Semiconductor Division 233 Kansas Street El Segundo, CA 90245	59993
Federal Screw Products, Inc. 3917 N. Kedzie Avenue Chicago, IL 60618	73734	Hewlett-Packard Company Corporate HQ 3000 Hanover Street Palo Alto, CA 94304	28480	International Rectifier 9220 Sunset Blvd. Los Angeles, CA 90069	81483
Fenwal Electronics Division of Kidde Walter and Company, Inc. 63 Fountain Street Framingham, MA 01701	15801	Hewlett-Packard Company Optoelectronics Division 640 Page Hill Road Palo Alto, CA 94304	50434	Intersil Inc. Subsidiary of General Electric Company 10710 N. Tantau Avenue Cupertino, CA 95014	32293
Fox Electronics Fox Enterprises, Inc. P.O. Box 1078 Cape Coral, FL 33910	61429	Hewlett-Packard Company Manufacturing Division Palo Alto, CA	98734	ITT Cannon Electric Division of International Telephone and Telegraph Corporation 10550 Talbert Avenue P.O. Box 8040 Fountain Valley, CA 92708	71468
General Connector Corporation Subsidiary of the Union Corporation 80 Bridge Street Newton, MA 02158	25330	Heyco Molded Products 1750 Blvd. P.O. Box 160 Kenilworth, NJ 07033	28520	ITT Components Division International Telephone and Telegraph Corporation 3201 S. Standard Street P.O. Box 2197 Santa Ana, CA 92707	61725
General Electric Company Semi-Conductor Products Department W. Genesee Street Auburn, NY 13021	03508	High Energy Corporation Subsidiary of Inductotherm Corporation Lower Valley Road Parkesburg, PA 19365	21052	ITT Jennings 970 McLaughlin Avenue San Jose, CA 95116	73905
General Electric Company Aviation Service Operation/CINTI 333 W. Seymour Avenue Cincinnati, OH 45216	05326	HI-G Company Subsidiary of Nytronics Inc. 101 Locust Street Hartford, CT 06114	02289	ITT Telecom Products Corporation Network Systems Division HWY 137 Suncrest Drive P.O. Box N Carroll Reece Station Johnson City, TN 37601	21340
General Electric Company Semi-Conductor Products Department Power Components Operation W. Genesee Street Auburn, NY 13021	09214	Honeywell, Inc. Micro Switch Division 11 W. Spring Street Freeport, IL 61032	91929	JFD Electronic Components A Division of Murata Erie North America 112 Mott Street Oceanside, NY 11572	73899
General Electric Company 3135 Easton Turnpike Fairfield, CT 06431	24446	Hughes Electronic Devices Corporation 13321 Grass Valley Avenue P.O. Box 185 Grass Valley, CA 95945	61587	Johnson EF Company 299 10th Avenue SW Waseca, MN 56093	74970
General Electronics, Inc. Paterson, NJ	80101	Hutchens Industries, Inc. 215 N. Patterson Avenue P.O. Box 1427 SSS Springfield, MO 65805	92967	Keystone Carbon Company 1935 State Street St. Marys, PA 15857	75263
General Instrument Corporation Government Systems Division 600 W. John Street Hicksville, NY 11802	05828	IDI Electric Canada LTD 33 Fuller Road Box 159 Ajax, Ontario Canada L1S 2E1	51144	Kings Electronics Company, Inc. 40 Marbledale Road Tuckahoe, NY 10707	91836
General Instrument Corporation Lamp Division/Worldwide 4433 N. Ravenswood Avenue Chicago, IL 60640	74276	Illinois Capacitor, Inc. 3757 W. Touhy Avenue Lincolnwood, IL 60645	74840	Kulka Electric Corporation A North American Philips Corporation Mt. Vernon, NY	75382
Gochenaour Marine Company Philadelphia, PA	72835	Illinois Tool Works, Inc. Fastex Division 195 Algonquin Road Des Plaines, IL 60016	02768	Kulka Smith, Inc. A North American Philips Company 1913 Atlantic Avenue Manasquan, NJ 08736	83330

T.O. 31R2-2URC-123

Lapointe Industries, Inc. Electronic Products Division 155 W. Main Street Rockville, CT 06066	94033	McDonnell Douglas Corporation McDonnell Aircraft Company P.O. Box 516 St. Louis, MO 63166	76301	Minnesota Mining and Manufacturing Company Electro Products Division 341 Factory Road Addison, IL 60101	52760
Lee Spring Company, Inc. 1462 62nd Street Brooklyn, NY 11219	84830	Mepco/Electra, Inc. A North American Philips Company P.O. Box 760 Mineral Wells, TX 76067	19701	Minnesota Mining and Manufacturing Company Data Recording Products Division 350 S. Lewis Road Camarillo, CA 93010	54254
Leeds and Northrup Company A Unit of General Signal Corporation Sumneytown Pike North Wales, PA 19454	31922	Mepco/Electra, Inc. 6071 St. Andrews Road Columbia, CS 29210	56699	Minor Rubber Company, Inc. 49 Ackerman Street Bloomfield, NJ 07003	76385
Library Efficiency Corporation New York, NY	81249	Mepco/Electra, Inc. 22 Columbia Road Morristown, NJ 07960	80031	Mite Corporation Amatom Electronic Hardware Division 446 Blake Street New Haven, CT 06515	06540
Licon Division of Illinois Tool Works, Inc. 6615 W. Irving Park Road Chicago, IL 60634	04426	Metraplex Corporation Berkshire Industrial Park Bldg. 3 Bethel, CT 06801	52559	Mite Corporation 466 Blake Street New Haven, CT 06515	26344
Litton Industries, Inc. Litton Systems Inc. Triad-Ultrad Division 305 N. Briant Street Huntington, IN 46750	04386	Midland-Ross Corporation Cambion Division Barnstead Road Pittsfield, NH 03263	53373	Molex, Inc. 2222 Wellington Court Lisle, IL 60532	27264
Litton Industries, Inc. Triad Distributor Division Huntington, IN	26667	Midland-Ross Corporation Cambion Division One Alewife Place Cambridge, MA 02140	71279	Moto Meter Gauge and Equipment Division Electric Auto Lite Company New York, NY	76490
Luminescent Systems Inc. Etna Road Grafton County Lebanon, NH 03766	32890	Micro Plastics, Inc. HWY 178 N. Flippin, AR 72634	13764	Motorola, Inc. Semiconductor Products Sector 5005 E. McDowell Road Phoenix, AZ 85008	04713
LXD 24500 High Point Road Cleveland, Ohio 44122	66670	Microtran Co., Inc. 145 E. Mineola Avenue P.O. Box 236 Valley Stream, NY 11582	00348	Murata Erie North America, Inc. Erie Operations 645 W. 11th Street Erie, PA 16512	72982
Magna Division Vermont American Corporation 1001 West Park Road Elizabethtown, KY 42701	11195	Midwest Components, Inc. 1981 Port City Blvd. P.O. Box 787 Muskegon, MI 49443	50157	Murato Erie Technological Products State College Operations 1900 W. College Avenue State College, PA 16801	18796
Magnavox Government and Industrial Electronics Co. 1313 Production Road Fort Wayne, IN 46808	37695	Mil Spec	81349	National Semiconductor Corporation Commerce Drive P.O. Box 443 Danbury, CT 06810	12040
Magnecraft Electric Company 5575 N. Lynch Avenue Chicago, IL 60630	94696	Mil Spec	96906	National Semiconductor Corporation 2900 Semiconductor Drive Santa Clara, CA 95051	27014
Magnum Electric Corporation 6385 Dixie HWY Erie, MI 48133	52458	Millen Division Electronic Instrument and Specialty Corporation 42 Pleasant Street Stoneham, MA 02180	57285	NEC America, Inc. 2741 Prosperity Avenue Fairfax, VA 22031	51984
Marine Corps. Navy Annex Washington, DC 20380	80372	Mini-Circuits Laboratory Division of Scientific Components Corporation 2625 E. 14th Street Brooklyn, NY 11235	15542	Neilsen Products Company Lake Elmo, MN	00758
Marson Corp. 130 Crescent Avenue Chelsea, MA 02150	10054	Minnesota Mining and Manufacturing Company Industrial Tape Division 3M Center St Paul, MN 55101	26066	Nielsen Hardware Corporation 770 Wethersfield Avenue P.O. Box 568 Hartford, CT 06141	98003
Masstech Corporation Subsidiary of Transtechnology Corporation Swamp Road RT 313 P.O. Box 2001 Doylestown, PA 18901	94464	Minnesota Mining and Manufacturing Company Industrial Coated Abrasives Division 3M Center St. Paul, MN 55101	28124	Niagara Straw Company, Inc. 72 Lakeview Avenue Buffalo, NY 14201	60963
Matsushita Electric Corporation of America One Panasonic Way P.O. Box 1501 Secaucus, NJ 07094	54473	Minnesota Mining and Manufacturing Company Energy Systems 3M Center Bldg. 551 St. Paul, MN 55101	30142	Nytronics Components Group, Inc. Subsidiary of Nytronics Inc. Orange Street Darlington, SC 29532	00213

Ohmite Manufacturing Company 3601 W. Howard Street Skokie, IL 60076	44655	RCA Corporation Solid State Division Crestwood Road Mountaintop, PA 18707	18722	Signetics Corporation Military Products Division 4130 S. Market Court Sacramento, CA 95834	18324
Ordnance Corps The Defense Logistics Services Center	00000	RCA Corporation 30 Rockefeller Plaza New York, NY 10020	49671	Siliconix, Inc. 2201 Laurelwood Road Santa Clara, CA 95054	17856
Palco Connector, Inc. 75 Center Street Bristol, CT 06010	58167	RCA Corporation RCA Service Company RTE 38 Cherry Hill, NJ 08358	77609	Silvered Electronic Mica Company, Inc. RT 6 Willimantic, CT 06226	61306
Panduit Corporation 17301 Ridgeland Tinley Park, IL 60477	06383	RCD Components, Inc. 330 Bedford Street Manchester, NH 03101	56637	Singer Company The Link Flight Simulation Division Advanced Products Operation 1077 E. Arques Avenue P.O. Box 3484 Sunnyvale, CA 94088	22903
PCC Pertec Division Pertec Computer Corporation 9600 Irondale Avenue Chatsworth, CA 91311	32097	Republic Electronics Corporation 176 E. 7th Street Paterson, NJ 07524	93958	SNC Manufacturing Company, Inc. 101 Waukau Road Oshkosh, WI 54901	83325
PEM Engineering Company Los Angeles, CA	99256	Rockwell International Corporation Collins Telecommunications Products Division Defense Electronics Operations 855 NE 35th Street Cedar Rapids, IA 52498	13499	Southco, Inc. 210 N. Brinton Lake Road Concordville, PA 19331	94222
Penn Engineering and Manufacturing Corporation Old Easton Road P.O. Box 1000 Danboro, PA 18916	46384	Rogan Corporation 3455 Woodhead Drive Northbrook, IL 60062	86797	Spectrol Electronics Corporation Subsidiary of Carrier Corporation 17070 E. Gale Avenue P.O. Box 1220 City of Industry, CA 91749	02111
Phoenix Specialty Manufacturing Company, Inc. 971 Stewart Avenue Garden City, LI, NY 11530	77264	Rotron Controls Division Rotron, Inc. Woodstock, NY	32284	Sprague Electric Company 87 Marshall Street North Adams, MA 01247	56289
PIC Design Corporation Division of Wells-Bensus Corporation Benson Road P.O. Box 1004 Middlebury, CT 06762	00141	Rotron, Inc. Custom Division 7 Hasbrouck Lane Woodstock, NY 12498	82877	Stackpole Corporation, The 201 Stackpole Street St. Marys, PA 15857	78488
Plastic Capacitors, Inc. 2623 N. Pulaski Road Chicago, IL 60639	99120	Samtec, Inc. 810 Progress Blvd. P.O. Box 1147 New Albany, IN 47150	55322	Stimpson Company, Inc. 900 Sylvan Avenue Bayport, NY 11705	57771
Plastiglide Manufacturing Corporation 2701 W. El Segundo Blvd. Hawthorne, CA 90250	11897	Sanders Associates, Inc. Daniel Webster HWY South Nashua, NH 03061	94117	Stone City Products, Inc. 1206 7th Street P.O. Box 369 Bedford, IN 47421	09166
Poulsen and Warden, Inc. Los Angeles, CA	77347	Sangamo Weston, Inc. Sangamo Capacitor Division Subsidiary of Schlumberger LTD Sangamo Road P.O. Box 128 Pickens, SC 29671	00853	Sundstrand Aviation Operations Unit of Sundstrand Corporation 4747 Harrison Avenue P.O. Box 7002 Rockford, IL 61125	99167
Power Conversion, Inc. 495 Boulevard Elmwood Park, NJ 07407	55002	Sargent Art Division of Mead Corporation Hazleton, PA	00493	Switchcraft, Inc. Subsidiary of Raytheon Company 5555 N. Elstron Avenue Chicago, IL 60630	82389
Pulse Engineering, Inc. 5004 Lehigh Road College Park, MD 20740	61735	Sealectro Corporation BICC Electronics 40 Lindeman Drive Trumbull, CT 06611	98291	T and B/Ansley Corporation Subsidiary of Thomas and Betts Corporation 4371 Valley Blvd. Los Angeles, CA 90031	15912
Pyrofilm Division Division of KDI Electronics Inc. 60 S. Jefferson Road Whippany, NJ 07981	03888	Seastrom Manufacturing Company, Inc. 701 Sonora Avenue Glendale, CA 91201	86928	Tektronix, Inc. 4900 SW Griffith Drive P.O. Box 500 Beaverton, OR 97077	80009
Quam Nichols Company 218 E. Marquette Road Chicago, IL 60637	74199	Shielding Technology, Inc. Subsidiary of Chomerics, Inc. 120 Ethel Road W. Piscataway, NJ 08854	59950	Texas Instruments Inc. Semiconductor Group 13500 N. Central Expressway P.O. Box 225012 M/S 49 Dallas, TX 75265	01295
R A F Electronic Hardware, Inc. 95 Silvermine Road Seymour, CT 06483	55566	Signal Transformer Company, Inc. 500 Bayview Avenue Inwood, NY 11696	08779		
Raychem Corporation 300 Constitution Drive Menlo Park, CA 94025	06090				
RCA Corporation Solid State Division Route 202 Somerville, NJ 08876	02735				

T.O. 31R2-2URC-123

Texas Instruments, Inc. Equipment Group 13500 N. Central EXPY P.O. Box 660246 M/S 3137 Dallas, TX 75266	96214	USM Corporation Subsidiary of Emhart Industries, Inc. USM Fastener Division 510 River Road Shelton, CT 06484	07707	Zierick Manufacturing Company Radio Circle Mt. Kisco, NY 10549	81814
Thermalloy Company, Inc. 2021 W. Valley View Lane P.O. Box 340839 Dallas, TX 75234	13103	USM Corporation Subsidiary of Emhart Industries, Inc. 140 Federal Street Boston, MA 02107	61957		
Thomas and Betts Corporation HWY 218 S. Iowa City, IA 52240	59730	Vaco Products Company 1510 Skokie Blvd. Northbrook, IL 60062	79061		
Thompson Industries Division of W M F Container Corporation 2501 E. Magnolia Street Phoenix, AZ 85036	32848	Varian Associates, Inc. Pulse Engineering Subsidiary 7250 Convoy CT P.O. Box 12235 San Diego, CA 92112	01961		
Toshiba Internation Industrial Division 13131 W. Little York Road P.O. Box 40906 Houston, TX 77041	61802	Varian Associates, Inc. EIMAC Division 301 Industrial Way San Carlos, CA 94070	06980		
Tracor Littelfuse, Inc. 800 E. Northwest HWY Des Plaines, IL 60016	75915	Varian Associates, Inc. Microwave Tube Division 611 Hansen Way Palo Alto, CA 94303	99313		
Triad Transformer Corporation Huntington, IN	16741	Varo, Inc. Electron Devices Division 2203 Walnut Street P.O. Box 401146 Garland, TX 75040	27777		
Triad-Utrad Division Litton Systems, Inc. National City, CA	81095	Varo Semiconductor, Inc. Subsidiary of Varo, Inc. 1000 N. Shiloh Road P.O. Box 40676 Garland, TX 75040	62703		
TRW, Inc. TRW Cinch Connectors Division 1501 Morse Avenue Elk Grove Village, IL 60007	71785	Veeco Instruments, Inc. Lambda Electronics Division 515 Broad Hollow Road Melville, NY 11747	80103		
TRW, Inc. TRW Electronic Components IRC Fixed Resistors Philadelphia Division 401 N. Broad Street Philadelphia, PA 19108	75042	Vitramon, Inc. Box 544 Bridgeport, CT 06601	95275		
Union Carbide Corporation Electronics Division HWY 276 SE P.O. Box 5928 Greenville, SC 29606	31433	Wakefield Engineering Company P.O. Box 818 Coeur D Alene, ID 83814	90372		
Uniroyal, Inc. Oxford Management and Research Center Benson Road Middlebury, CT 06749	61463	Waldes Kohinoor, Inc. 47-16 Austel Place Long Island City, NY 11101	79136		
United Shoe Machinery Corporation Cincinnati, OH	08544	Waterous Company 300 John E. Carroll Avenue E. South St. Paul, MN 55075	79218		
Unitrode Corporation 580 Pleasant Street Watertown, MA 02172	12969	Westinghouse Electric Corporation Defense and Electronic Systems Center Baltimore-Washington Airport P.O. Box 1897 MS 984 Baltimore, MD 21203	97942		
U.S. Army Armament Research and Development Command Dover, NJ 07801	19200	WH Brady Company 727 W. Glendale Avenue Milwaukee, WI 53209	95987		
U.S. Army Communications and Electronics Materiel Readiness Command Logistics Engineering Directorate Fort Monmouth, NJ 07703	80063	Zeus Industrial Products, Inc. Ft. Thompson Street Raritan, NJ 08869	32039		
U.S. Army Tank Automotive Command Warren, MI 48090	19207	Zierick Manufacturing Company Radio Circle Mt. Kisco, NY 10549	79963		

JOINT MILITARY SERVICES UNIFORM SMR CODING MATRIX T.O. 00-25-195

SOURCE		USE		MAINTENANCE REPAIR		RECOVERABILITY		ERRC CODE			
1st Position	2nd Position	3rd Position	4th Position	5th Position	6th Position						
P	A Stocked	O Remove/Replace at Organizational Level	Z No Repair	Z Nonreparable Condemn at 3rd Position Level	N Nonrecoverable XB3 Condemn at Any Level						
	B Insurance										
	C Deteriorative Support Equipment, Stocked										
	E Support Equipment, Nonstocked										
	F Support Equipment, Sustained Life Support										
	F Intermediate Kit										
	D Depot Kit										
K	B In Both Kits	F Remove/Replace at Intermediate Level	F Repair at Intermediate	F Repairable Condemn at Intermediate	C Recoverable XD1 (SCARS) Condemn at Depot						
	O Organization										
	F Intermediate										
M	D Depot	D Remove/Replace at Depot Level	D Limited Repair at O or F Level	D Repairable Condemn at Depot	S Nonexpendable Support Equipment, Depot ND2						
	O Organization										
	F Intermediate										
A	D Depot	D Remove/Replace at Depot Level	D Overhaul at Depot	A Special Handling	U Nonexpendable Support Equipment, Organizational and Intermediate NF2						
	O Organization										
	F Intermediate										
X	D Depot	D Requisition NHA	L Repair at Depot								
	A Requisition NHA										
	B Reclamation from IM										
	C Mfg Drawings										

Section II. MAINTENANCE PARTS LIST

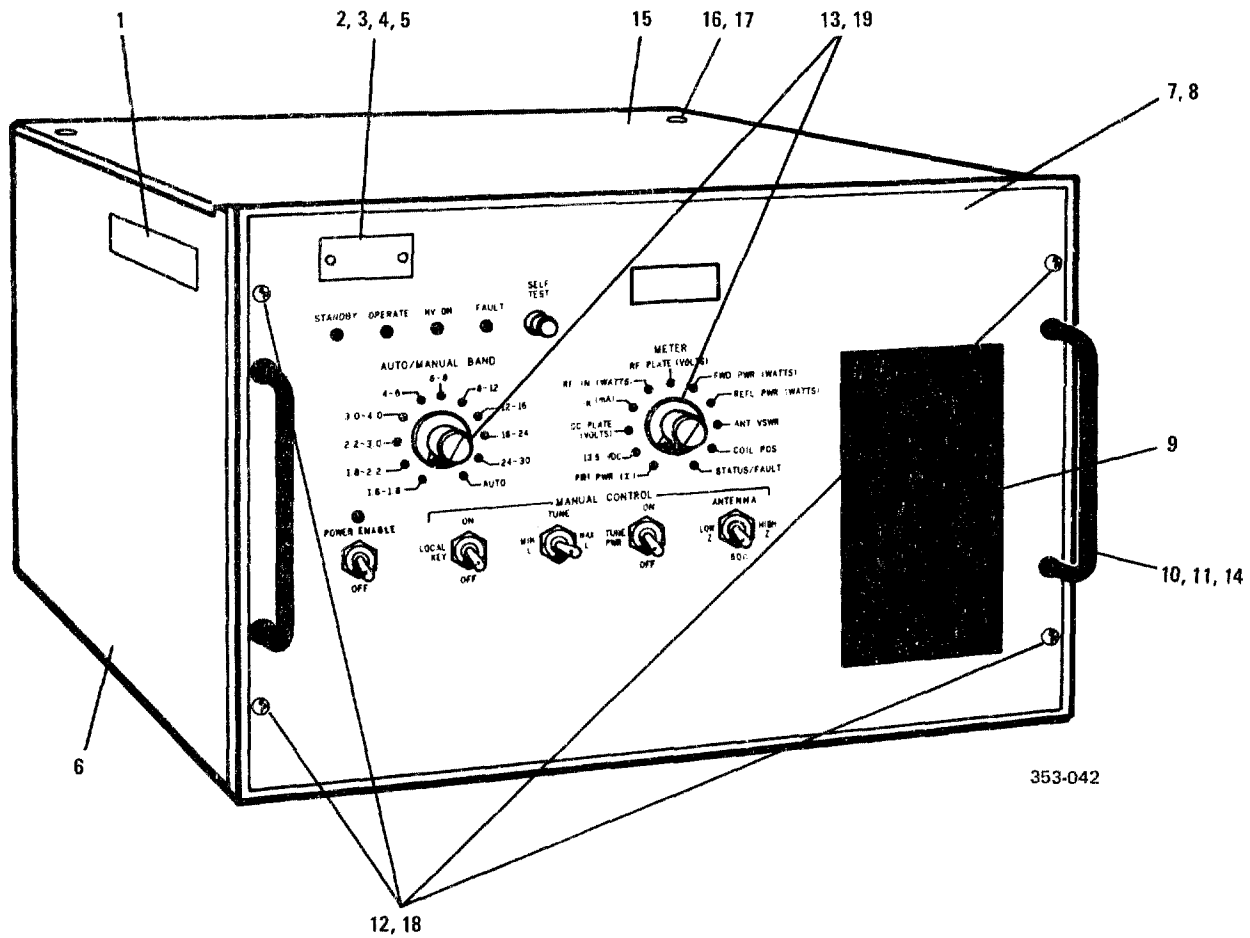


Figure 7-1. 1 KW LPA, AM-7224/URC, Front View

NOTE

To find index numbers for circuit board components, use the reference designator index at the end of this chapter. The complete reference designator for a circuit board component consists of "1," followed by the assembly designator (A1, A2, etc.), then the reference designator on the illustration. For example, the complete reference designator for R25 on the Front Panel PWB Assy is 1A7A1 R25.

Figure & Index Number	Part Number	FSCM	Description							Units Per Assy	Usable On Code	SMR Code
			1	2	3	4	5	6	7			
7-1 -	10087-0000	14304	AMPLIFIER, RF*							1		PEODD
- 1	10087-0071	14304	. PLATE, 1DENT							1		MDO
- 2	10087-0008	14304	. NAMEPLATE							1		MDO
- 3	MS51957-14	96906	. SCREW, MACHINE (AP)							4		PAOZZ
- 4	MS35338-135	96906	. WASHER, LOCK (AP)							2		PAOZZ
- 5	MS15795-803	96906	. WASHER, FLAT (AP)							4		PAOZZ
- 6	10087-3100	14304	. CHASSIS, ELEC, EQPT							1		PAOLD
- 7	10087-2005	14304	. . PANEL							1		XB
- 8	10087-2006	14304	. . OVERLAY							1		XB
- 9	10087-2010	14304	. . FILTER, AIR							1		PAOZZ
- 10	A1013-29	06540	. . HANDLE							2		XB
- 11	16022-A2	06540	. . BUSHING							4		XB
- 12	10087-2011	14304	. . WASHER, FLAT (AP)							4		XB
- 13	MS91528-1F1B	96906	. . KNOB							2		PAOZZ
- 14	MS24693-C272	96906	. . SCREW, MACHINE (AP)							4		PAOZZ
- 15	10087-3104	14304	. . COVER							1		XB
- 16	AJ4-35-SS	32039	. . STUD							2		XB
- 17	SR-4	72794	. . RETAINER							2		PADZZ
- 18	10087-2012	14304	. . SCREW, MACHINE (AP)							4		XB
- 19	AN565DC4L4	96906	. . SCREW, MACHINE (AP)							4		PADZZ

*Installation requires Ancillary Kit 10087-0060. See figure 7-3.

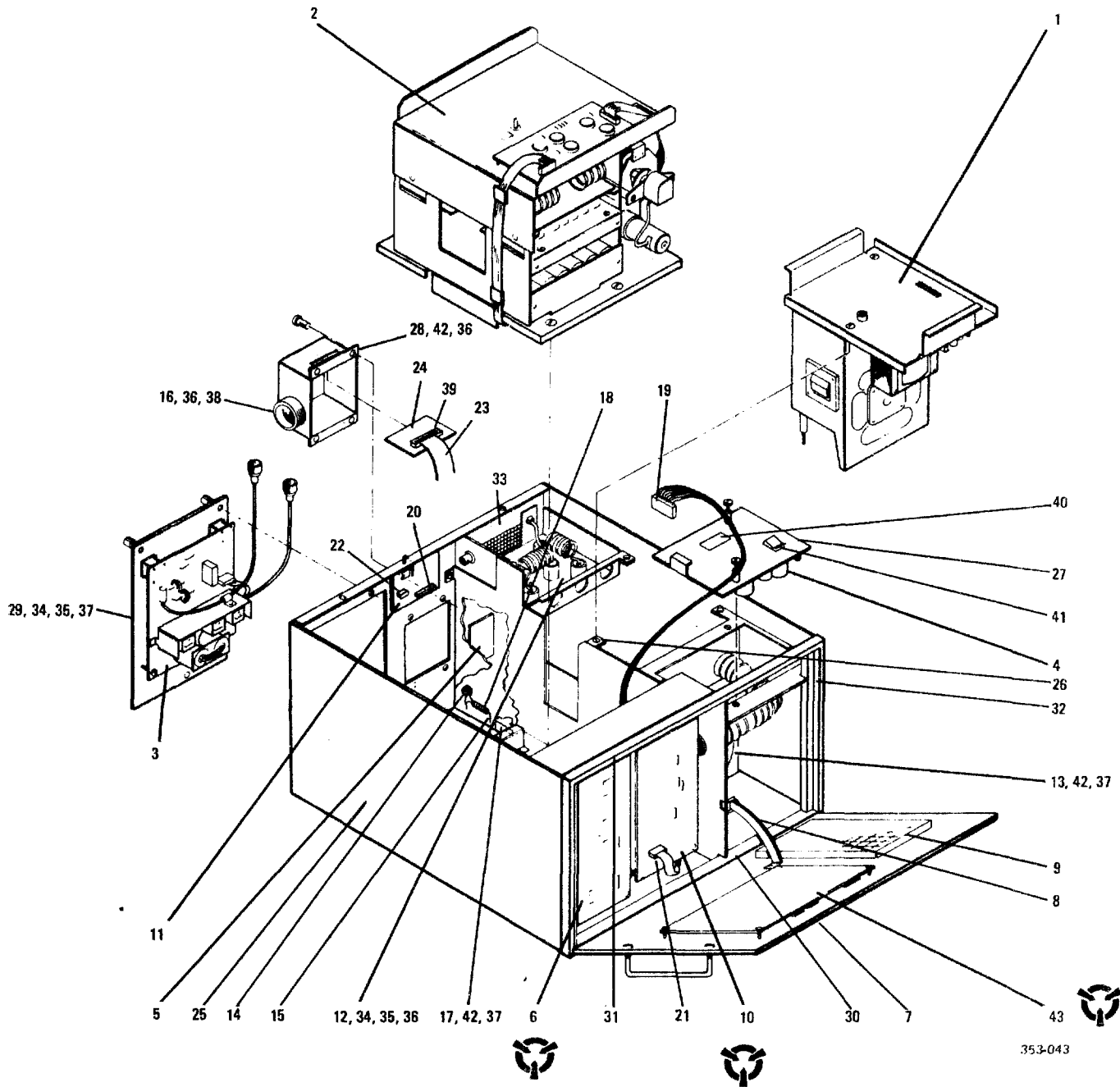


Figure 7-2. 1 KW LPA, AM-7224/URC, Exploded View

NOTE

To find index numbers for circuit board components, use the reference designator index at the end of this chapter. The complete reference designator for a circuit board component consists of "1," followed by the assembly designator (A1, A2, etc.), then the reference designator on the illustration. For example, the complete reference designator for R25 on the Front Panel PWB Assy is 1A7A1 R25.

Figure & Index Number	Part Number	FSCM	Description							Units Per Assy	Usable On Code	SMR Code
			1	2	3	4	5	6	7			
7-2 - 1	10087-3200	14304								1		PAODD
- 2	10087-3700	14304								1		PAODD
- 3	10087-4600	14304								1		PAODD
- 4	10087-1500	14304								1		PAOLD
- 5	10086-7200	14304								1		PAODD
- 6	10086-9200	14304								1		PAODD
- 7	10087-2000	14304								1		XB
- 8	10087-2004	14304								1		XB
- 9	10087-2008	14304								1		XB
- 10	10086-7100	14304								1		PAOLD
- 11	10087-3140	14304								1		PAOLD
- 12	10087-4500	14304								1		PAOLD
- 13	10086-1400	14304								1		PAOZZ
- 14	75GA-D25	56289								1		PADZZ
- 15	2994-14-1	17117								2		XB
- 16	MS3102R28-18P	96906								1		PADZZ
- 17	8101FSP-90	01009								1		PADZZ
- 18	5248	96804								1		PADZZ
- 19	22-01-3147	27264								2		PADZZ
- 20	09-91-0600	27264								2		PADZZ
- 21	22-01-3107	27264								1		PADZZ
- 22	22-01-3057	27264								2		PADZZ
- 23	10087-3135	14304								1		PAOZZ
- 24	10087-3170	14304								1		PAOZZ
- 25	10087-3103	14304								1		XB
- 26	SQ-C4-20	32039								3		XB
- 27	10087-3105	14304								1		XB
- 28	10087-3109	14304								1		XB
- 29	10087-3113	14304								1		XB
- 30	10087-3116	14304								1		XB
- 31	10087-3117	14304								1		XB
- 32	10087-3118	14304								2		XB
- 33	10087-3119	14304								1		XB
- 34	MS51957-14	96906								8		PADZZ
- 35	MS35338-135	96906								10		PADZZ
- 36	MS51957-28	96906								14		PADZZ
- 37	MS51957-30	96906								1		PADZZ
- 38	H-6768	14304								11		XB
- 39	250817-1	00779								1		XB
- 40	MP-0745	14304								3		MDO
- 41	3484-1000	54254								5		PADZZ
- 42	MS15795-806	96906								5		PADZZ
- 43	10087-2100	14304								1		PAODD

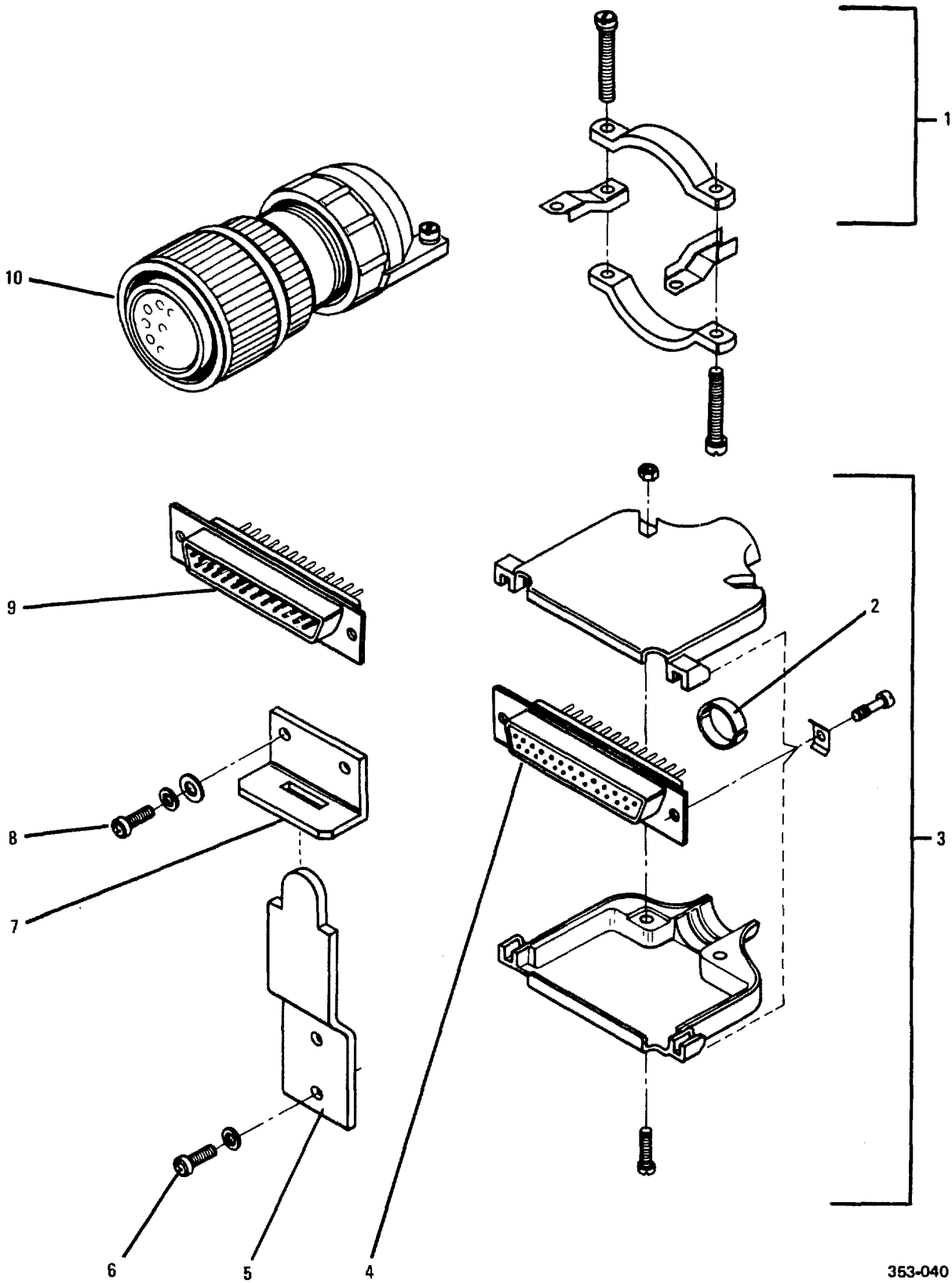


Figure 7-3. Installation Kit for 1 KW LPA

353-040

Figure & Index Number	Part Number	FSCM	Description							Units Per Assy	Usable On Code	SMR Code
			1	2	3	4	5	6	7			
7-3 -	10087-0060	14304	INSTALLATION KIT							1		XB
- 1	10-36233-243	77820	. RETAINER							2		XB
- 2	745508-8	00779	. BUSHING							2		XB
- 3	745173-2	00779	. COVER, CONN							2		PAOZZ
- 4	17-80250-16	74868	. CONNECTOR, RCPT, ELEC							1		PAOZZ
- 5	10087-3107	14304	. BRACKET, ANGLE							8		XB
- 6	MS51957-30	96906	. SCREW, MACHINE (AP)							16		PAOZZ
- 7	10087-3106	14304	. BRACKET, ANGLE							4		XB
- 8	MS51957-17	96906	. SCREW, MACHINE (AP)							8		PAOZZ
- 9	DBM25P	71468	. CONNECTOR, RCPT, ELEC							1		PAOZZ
- 10	10-109628-18S	77820	. CONNECTOR, PLUG, ELEC							2		PADZZ

Figure & Index Number	Part Number	FSCM	Description							Units Per Assy	Usable On Code	SMR Code
			1	2	3	4	5	6	7			
7-4 -	10087-3200	14304	ELECTRON TUBE ASSY, A1							1		PAODD
- 1	HT55T309CB	21052	. CAPACITOR, FXD, CER							1		PADZZ
- 2	10087-3230	14304	. CAPACITOR, FXD, CER							1		PADZZ
- 3	10043-0033	14304	. CAPACITOR, FXD, CER							1		PADZZ
- 4	75GA-D25	56289	. CAPACITOR, FXD, CER							1		PADZZ
- 5	CK70AW152M	81349	. CAPACITOR, FXD, CER							1		PADZZ
- 6	M39014/2-1350	81349	. CAPACITOR, FXD, CER							1		PADZZ
- 7	JAN1N5711	81349	. SEMICOND DEVICE, DIO							1		PADZZ
- 8	2308-14-1	17117	. SPACER							1		XB
- 9	MS77068-1	96906	. TERMINAL, LUG							3		PADZZ
- 10	MS77068-3	96906	. TERMINAL LUG							1		PADZZ
- 11	MS77068-2	96906	. TERMINAL LUG							2		PADZZ
- 12	8948-3307	14304	. COIL, RF							1		PADZZ
- 13	MS90539-11	96906	. COIL, RF							1		PADZZ
- 14	8101MP	01009	. CONNECTOR, PLUG, ELEC							1		PADZZ
- 15	22-01-3037	27264	. CONNECTOR, PLUG, ELEC							1		PADZZ
- 16	MS313-4994F	19647	. RESISTOR, FXD, WW							1		PADZZ
- 17	10087-3208	14304	. TRANSFORMER, RF							1		PADZZ
- 18	A2-61864	00159	. JACK, TIP							1		PADZZ
- 19	8877/3CX1500A7	06980	. TUBE, ELECTRON							1		PAOZZ
- 20	122-0247-202	74970	. SOCKET, ELCTR N TUBE							1		PADZZ
- 21	10087-3205	14304	. CHASSIS, ELEC, EQPT							1		XB
- 22	10019-1310	14304	. GRID RING ASSY							1		XB
- 23	MS51957-44	96906	. SCREW MACHINE							4		PAOZZ
- 24	MS15795-807	96906	. WASHER, FLAT (AP)							8		PADZZ
- 25	5612-18-20	86928	. WASHER, FLAT, TEFLON							4		PAOZZ
- 26	10087-3204	14304	. CHIMNEY							1		XB
- 27	10019-1308	14304	. CONTACT, ELEC							1		XB
- 28	10019-1309	14304	. BRACKET, ANGLE							1		XB
- 29	10019-1307	14304	. RETAINER							1		XB
- 30	MS51957-30	96906	. SCREW, MACHINE (AP)							2		PADZZ
- 31	MS51957-29	96906	. SCREW, MACHINE (AP)							4		PAOZZ
- 32	MS35649-244	96906	. NUT PLAIN HEX							1		PAOZZ
- 33	391-3314	14304	. HOLDER, RF CHOKE							2		XB
- 34	MS24693-C28	96906	. SCREW, MACHINE (AP)							2		PAOZZ
- 35	MS35338-135	96906	. WASHER, LOCK (AP)							1		PADZZ
- 36	MS51957-13	96906	. SCREW MACHINE							1		PAOZZ
- 37	MS51957-14	96906	. SCREW, MACHINE (AP)							5		PADZZ
- 38	21050	73734	. SCREW, MACHINE (AP)							1		PAOZZ
- 39	AN921-6	73734	. WASHER, FLAT (AP)							5		PAOZZ
- 40	1384	73734	. WASHER, LOCK (AP)							5		PAOZZ
- 41	21045	73734	. SCREW, MACHINE (AP)							4		PAOZZ
- 42	MS35649-265	96906	. NUT, BRASS, HEX							2		PAOZZ
- 43	10087-3206	14304	. PLATE, INSULATOR							1		XB
- 44	H-6768	14304	. NUT, CLINCH (AP)							7		XB
- 45	21042	73734	. SCREW, MACHINE (AP)							1		PAOZZ
- 46	MS21266-2N	96906	. GUARD, EDGE							2		PADZZ
- 47	3484-1000	54254	. CLAMP CABLE							1		XB
- 48	10087-3210	14304	. CONTACT, ELEC							1		XB
- 49	10087-3209	14304	. CONTACT, ELEC							1		XB
- 50	10087-3211	14304	. PLATE, MTG							1		XB

Figure & Index Number	Part Number	FSCM	Description							Units Per Assy	Usable On Code	SMR Code
			1	2	3	4	5	6	7			
-- 51	10087-3212	14304	.							1		XB
- 52	AJ4-505-S	72794	.							3		PAOZZ
- 53	SR-4	72794	.							3		XB
- 54	D-142-50	06090	.							2		XB
- 55	MS3367-4-9	96906	.							2		XB
- 56	TC-105A	59730	.							2		XB
- 57	10087-3213	14304	.							1		XB
- 58	08-56-0110	27264	.							6		PADZZ
- 59	10087-3220	14304	.							1		XB
- 60	H-6767	96906	.							8		XB

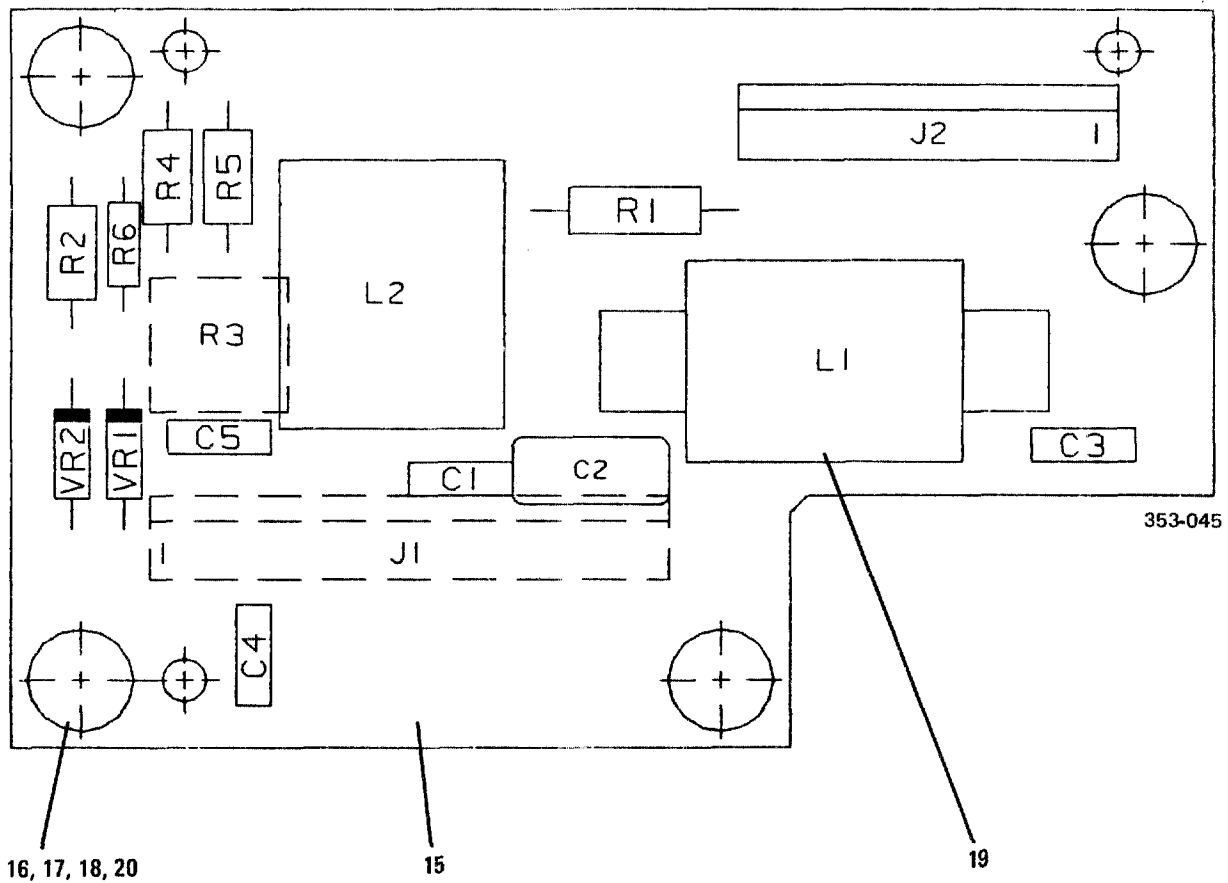
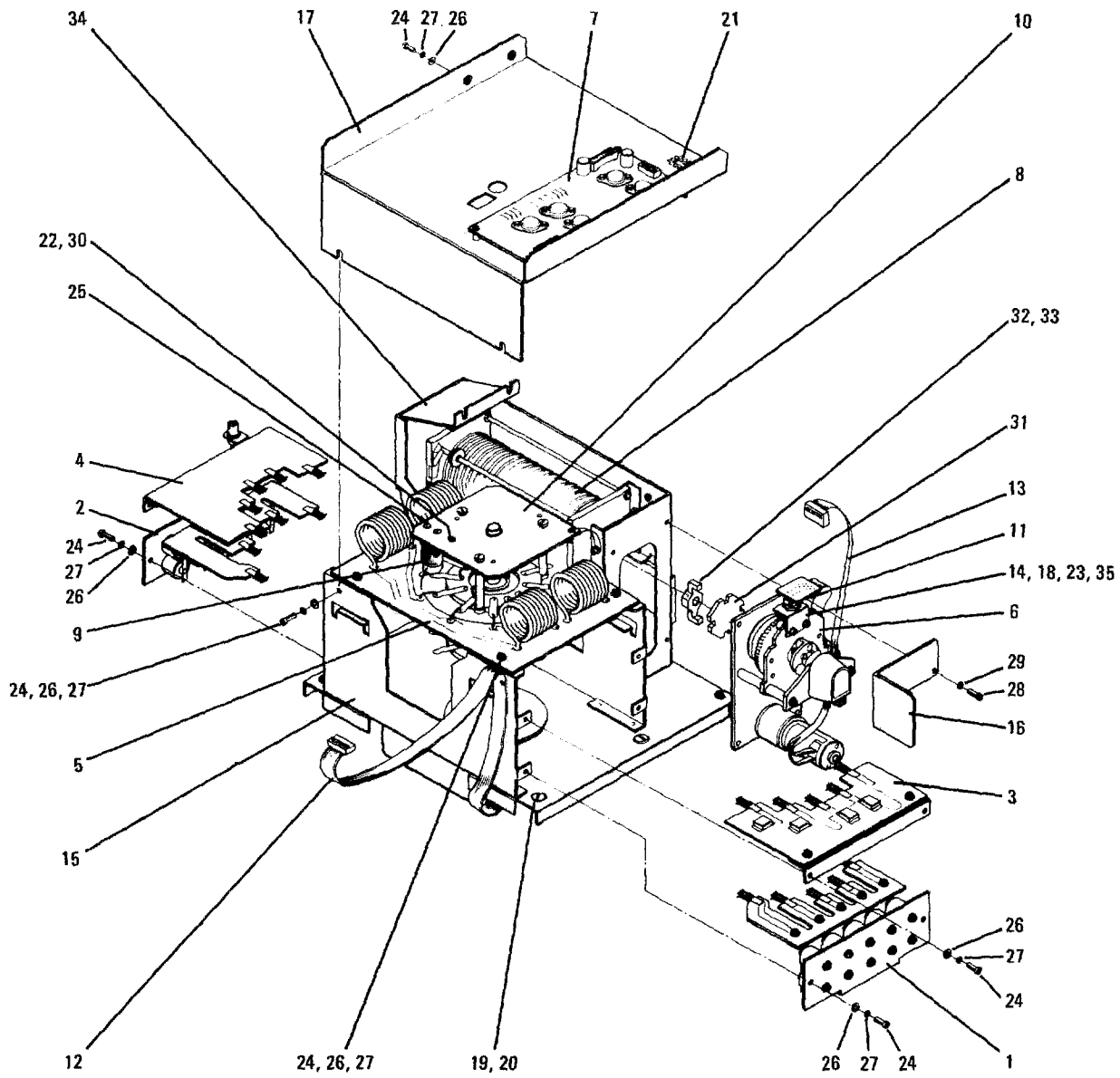


Figure 7-5. Bias/Sample PWB Assy, A1A1

NOTE

To find index numbers for circuit board components, use the reference designator index at the end of this chapter. The complete reference designator for a circuit board component consists of "1," followed by the assembly designator (A1, A2, etc.), then the reference designator on the illustration. For example, the complete reference designator for R25 on the Front Panel PWB Assy is 1A7A1 R25.

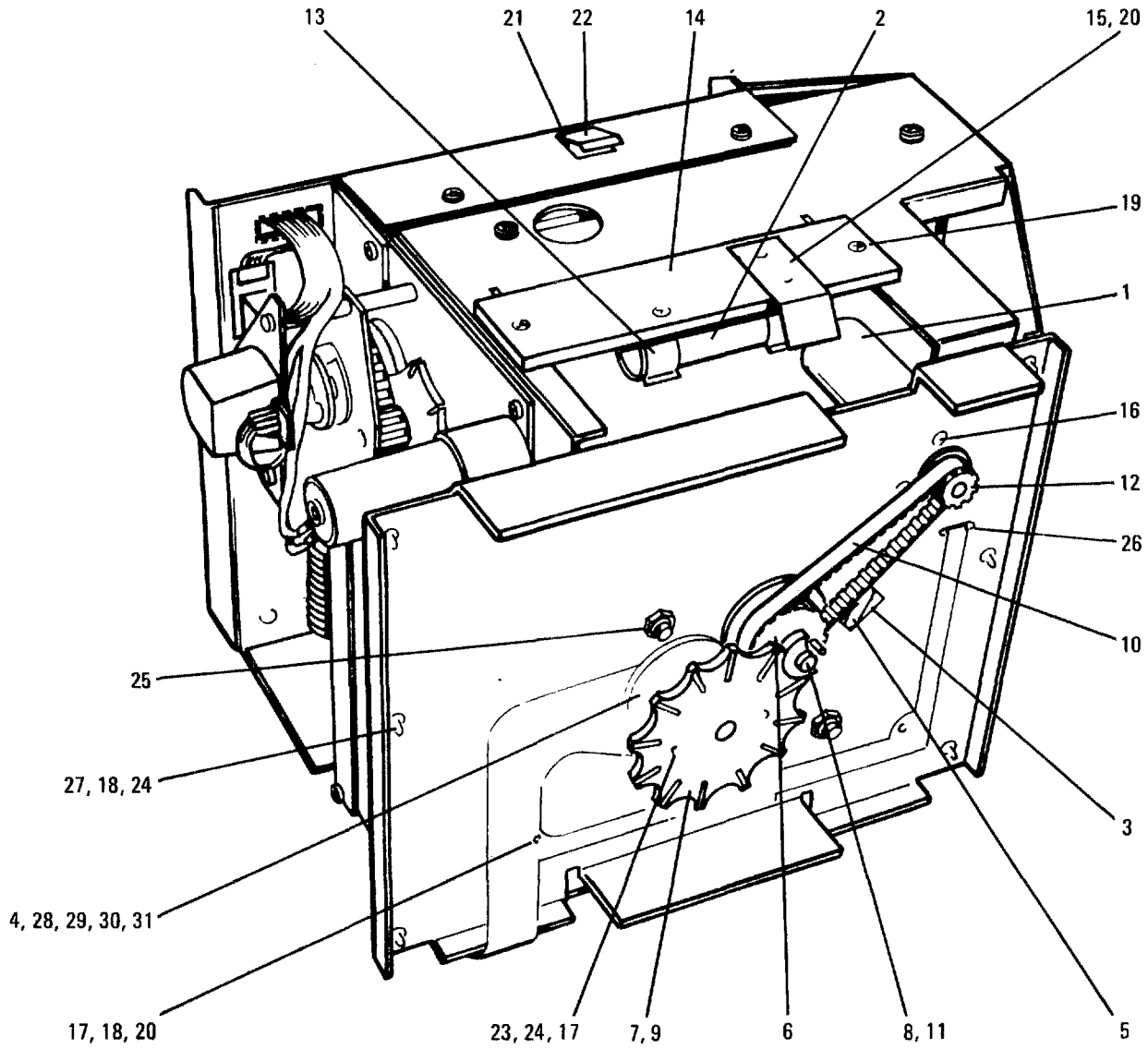
Figure & Index Number	Part Number	FSCM	Description							Units Per Assy	Usable On Code	SMR Code
			1	2	3	4	5	6	7			
7-5 -	10087-3220	14304	CIRCUIT	CARD	ASSY,	A1A1				1		XB
- 1	CK06BX104K	81349	.	CAPACITOR,	FXD,	CER				3		PADZZ
- 2	CMR05E470GODR	81349	.	CAPACITOR,	FXD,	MICA				1		PADZZ
- 3	M39014/02-1338	81349	.	CAPACITOR,	FXD,	CER				1		PADZZ
- 4	22-11-2142	27264	.	CONNECTOR,	RCPT,	ELEC				1		PADZZ
- 5	22-11-2102	27264	.	CONNECTOR,	RCPT,	ELEC				1		PADZZ
- 6	05801	76490	.	TRANSFORMER,	RF					1		PADZZ
- 7	10087-3207	14304	.	TRANSFORMER						1		PADZZ
- 8	ERD50TJ224	54473	.	RESISTOR,	FXD,	COMP				1		PADZZ
- 9	RNC55K5111FS	81349	.	RESISTOR,	RXD,	FILM				1		PADZZ
- 10	3386F-1-203	32997	.	RESISTOR	FXD	FILM				1		PADZZ
- 11	RNC55K1502FS	81349	.	RESISTOR,	FXD,	FILM				1		PADZZ
- 12	RNC55K1133FS	81349	.	RESISTOR,	FXD,	FILM				1		PADZZ
- 13	CF07-471J	78488	.	RESISTOR,	FXD,	COMP				1		PADZZ
- 14	JAN1N751A	81349	.	SEMICOND	DEVICE,	DIO				2		PADZZ
- 15	10087-3229	14304	.	CIRCUIT	CARD					1		XB
- 16	6611-0135	14304	.	RETAINER,	SCREW					4		XB
- 17	10085-5156	14304	.	BUSHING						4		XB
- 18	MS51957-17	96906	.	SCREW,	MACHINE	(AP)				4		PADZZ
- 19	904-380	52559	.	SPACER						2		PADZZ
- 20	MS35338-135	96906	.	WASHER,	LOCK	(AP)				4		PADZZ



353-046

Figure 7-6. Tank Assy, A2, Exploded View

Figure & Index Number	Part Number	FSCM	Description	Units Per Assy	Usable On Code	SMR Code
7-6 -	10087-3700	14304	TRANSFORMER ASSY,RF,A2	1		PAODD
- 1	10087-3740	14304	. TUNE CAP ASSY,A2A1	1		PADLD
- 2	10087-3750	14304	. TUNE CAP ASSY,A2A2	1		PADLD
- 3	10087-3760	14304	. CIRCUIT CARD ASSY,A2A3	1		XB
- 4	10087-3770	14304	. CIRCUIT CARD ASSY,A2A4	1		XB
- 5	10087-3780	14304	. CIRCUIT CARD ASSY,A2A5	1		XB
- 6	10086-3720	14304	. XFMR DRIVE ASSY,A2A6	1		XA
- 7	10086-3730	14304	. CIRCUIT CARD ASSY,A2A7	1		XB
- 8	10087-3709	14304	. TRANSFORMER,RF	1		PADZZ
- 9	10087-3785	14304	. TRANSFORMER,RF	1		PADZZ
- 10	10087-3708	14304	. SWITCH	1		PADZZ
- 11	7105TV30QE	09353	. SWITCH,TOGGLE	1		PADZZ
- 12	10086-3799	14304	. CABLE ASSY,RF	1		XB
- 13	10087-3819	14304	. CABLE ASSY,RF	1		XB
- 14	10086-3726	14304	. PLATE,MTG	1		XB
- 15	10087-3705	14304	. CHASSIS,ELEC,EQPT	1		XB
- 16	10087-3706	14304	. PROTECTOR,ELEC	1		XB
- 17	10087-3703	14304	. COVER	1		XB
- 18	8154-A-440-0	14304	. SPACER	2		XB
- 19	AJ4-35	32039	. STUD	4		XB
- 20	SR-4	72794	. RETAINER	4		XB
- 21	MS21266-1N	96906	. GUARD,EDGE	3		PADZZ
- 22	MS51957-13	96906	. SCREW MACHINE	4		PADZZ
- 23	MS35338-135	96906	. WASHER,LOCK (AP)	8		PADZZ
- 24	MS51957-28	96906	. SCREW,MACHINE (AP)	12		PADZZ
- 25	010632B037	13764	. SCREW,MACHINE,NYLON	2		PAOZZ
- 26	MS15795-805	96906	. WASHER,FLAT (AP)	18		PADZZ
- 27	MS35338-136	96906	. WASHER,LOCK (AP)	22		PAOZZ
- 28	MS51957-44	96906	. SCREW,MACHINE (AP)	2		PADZZ
- 29	MS35338-137	96906	. WASHER,LOCK (AP)	4		PAOZZ
- 30	841-00	92967	. NUT,CLINCH (AP)	1		PAOZZ
- 31	10087-3721	14304	. BRACKET,MTG	1		PADZZ
- 32	10087-3722	14304	. WHEEL,INDEX	1		PADZZ
- 33	MS51021-22	96906	. SCREW,MACHINE (AP)	8		PADZZ
- 34	10087-3710	14304	. BRACKET,ANGLE	1		XB
- 35	MS51957-15	96906	. SCREW,MACHINE (AP)	2		PADZZ



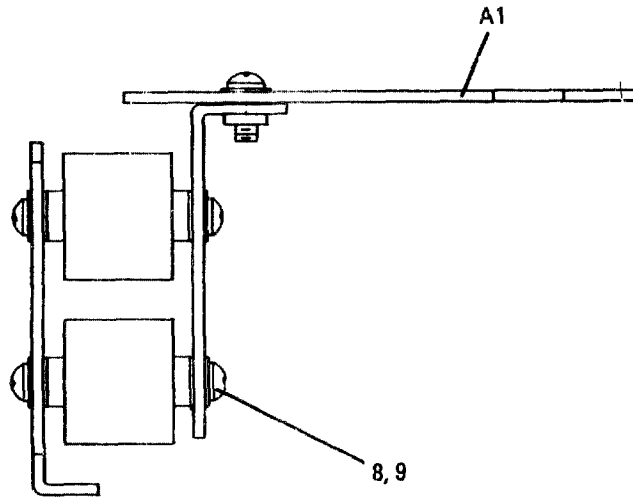
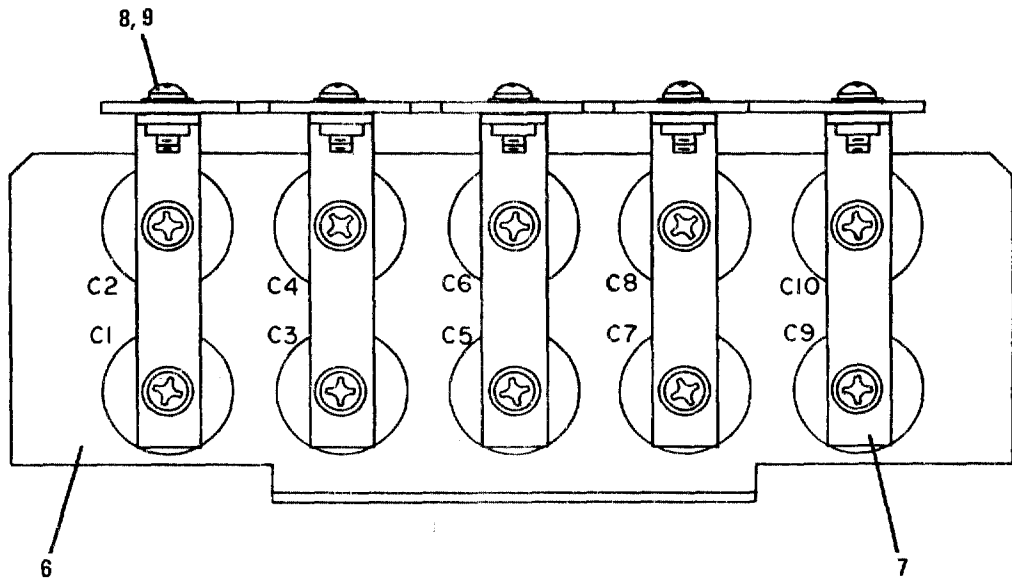
353-047

Figure 7-7. Tank Assy, A2, Bottom View

NOTE

To find index numbers for circuit board components, use the reference designator index at the end of this chapter. The complete reference designator for a circuit board component consists of "1," followed by the assembly designator (A1, A2, etc.), then the reference designator on the illustration. For example, the complete reference designator for R25 on the Front Panel PWB Assy is 1A7A1 R25.

Figure & Index Number	Part Number	FSCM	Description 1 2 3 4 5 6 7	Units	Usable	SMR Code
				Per Assy	On Code	
7-7 -	10087-3700	14304	TRANSFORMER ASSY, RF, A2	1		PAODD
- 1	10086-3703	14304	. MOTOR, ELEC	1		PADZZ
- 2	885SP220L	72819	. RESISTOR, FXD, WW	1		PADZZ
- 3	V3-343-D8	91929	. SWITCH SENSITIVE	1		PADZZ
- 4	6628-3460	14304	. SWITCH WAFER	1		PADZZ
- 5	JV-5	91929	. ACTUATOR	1		XB
- 6	10086-3806	14519	. PULLEY	1		PADZZ
- 7	10086-3712	14304	. WHEEL, INDEX	1		XB
- 8	43D33	29964	. BLOCK, BEARING	1		XB
- 9	10086-3788	14304	. DISC, MTG	1		XB
- 10	106XL037	61463	. BELT, ENDLESS	1		PADZZ
- 11	5144-25-S-ZD	79136	. RING, RETAINER	1		XB
- 12	10086-3709	14304	. SPACER, SHAFT	1		XB
- 13	4521-75-62-1T	86928	. RETAINER	2		XB
- 14	10087-3716	14304	. INSULATOR	1		XB
- 15	10087-3717	14304	. PROTECTOR, ELEC	1		XB
- 16	MS51959-14	96906	. SCREW, MACHINE (AP)	7		PAOZZ
- 17	MS15795-805	96906	. WASHER, FLAT (AP)	18		PADZZ
- 18	MS51957-27	96906	. SCREW, MACHINE (AP)	10		PADZZ
- 19	MS51959-28	96906	. SCREW, MACHINE (AP)	3		PAOZZ
- 20	H-6768	14304	. NUT, CLINCH (AP)	4		XB
- 21	10087-3211	14304	. PLATE, FINGER STK	1		PADZZ
- 22	10087-3212	14304	. CONTACT, ELECTRICAL	1		PADZZ
- 23	MS51957-28	96906	. SCREW MACHINE	12		PADZZ
- 24	MS35338-136	96906	. WASHER, LOCK (AP)	22		PAOZZ
- 25	H-6767	14304	. NUT, CLINCH (AP)	5		XB
- 26	MS21266-2N	96906	. GUARD, EDGE	3		PADZZ
- 27	P101-447-495	89032	. STUD FRICTION CATCH	2		PAOZZ
- 28	MS15795-803	96906	. WASHER, FLAT (AP)	2		PADZZ
- 29	8154-A-440-0	14304	. SPACER	2		XB
- 30	MS35338-135	96906	. WASHER, LOCK (AP)	8		PADZZ
- 31	MS51957-15	96906	. SCREW, MACHINE (AP)	2		PADZZ



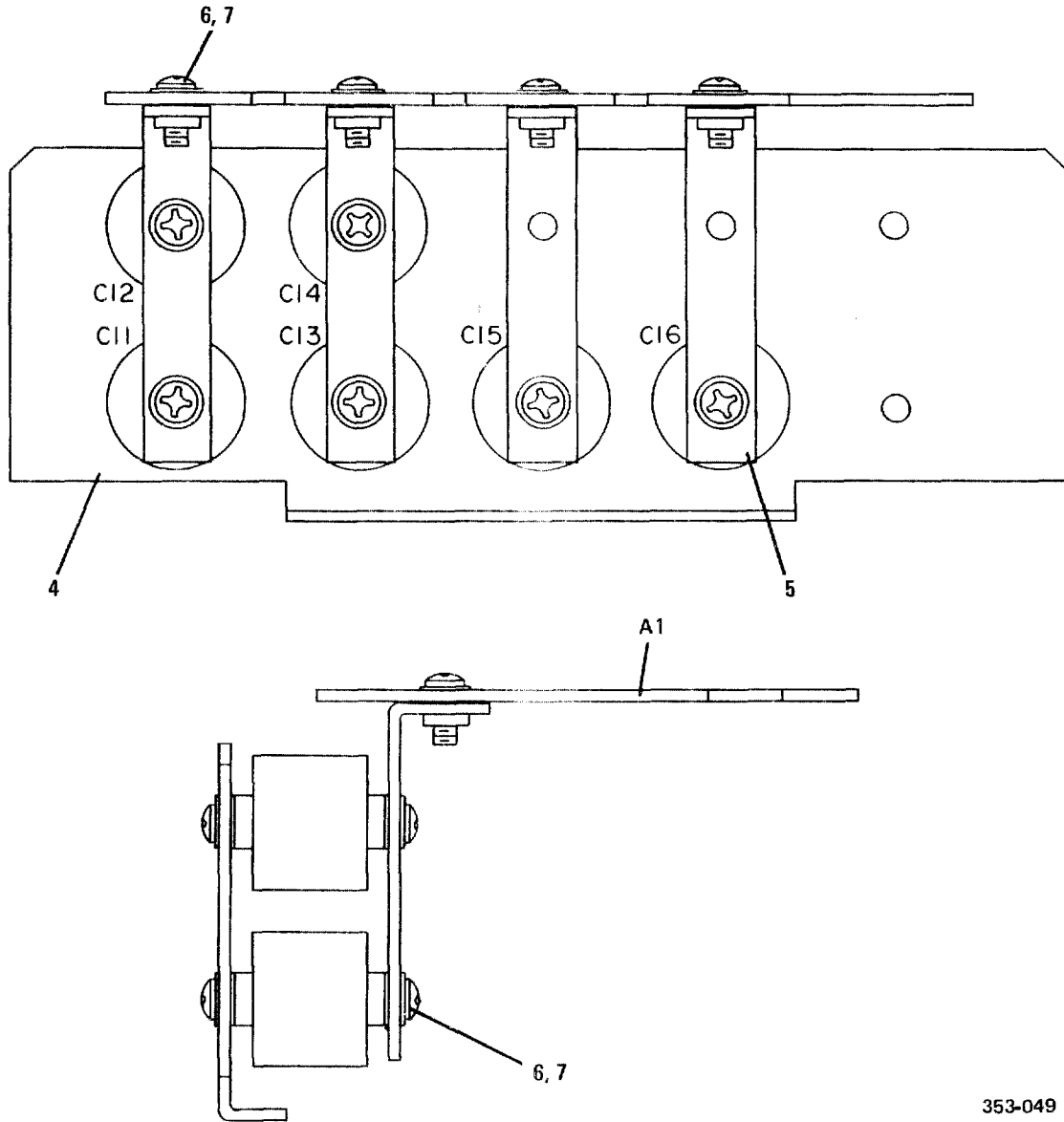
353-048

Figure 7-8. Tune Capacitor No. 1 Assy, A2A1

NOTE

To find index numbers for circuit board components, use the reference designator index at the end of this chapter. The complete reference designator for a circuit board component consists of "1," followed by the assembly designator (A1, A2, etc.), then the reference designator on the illustration. For example, the complete reference designator for R25 on the Front Panel PWB Assy is 1A7A1 R25.

Figure & Index Number	Part Number	FSCM	Description							Units Per Assy	Usable On Code	SMR Code
			1	2	3	4	5	6	7			
7-8 -	10087-3740	14304								1		PADLD
- 1	10087-3745	14304	.							1		XB
- 2	J1HT50UJ141J252	73905	.							2		PADZZ
- 3	HT50T101JB	21052	.							4		PADZZ
- 4	HT50V500JA	21052	.							3		PADZZ
- 5	HT50V250JA	21052	.							1		PADZZ
- 6	10087-3742	14304	.							1		XB
- 7	10087-3743	14304	.							5		XB
- 8	MS51957-27	96906	.							25		PAOZZ
- 9	MS35333-71	96906	.							45		PAOZZ



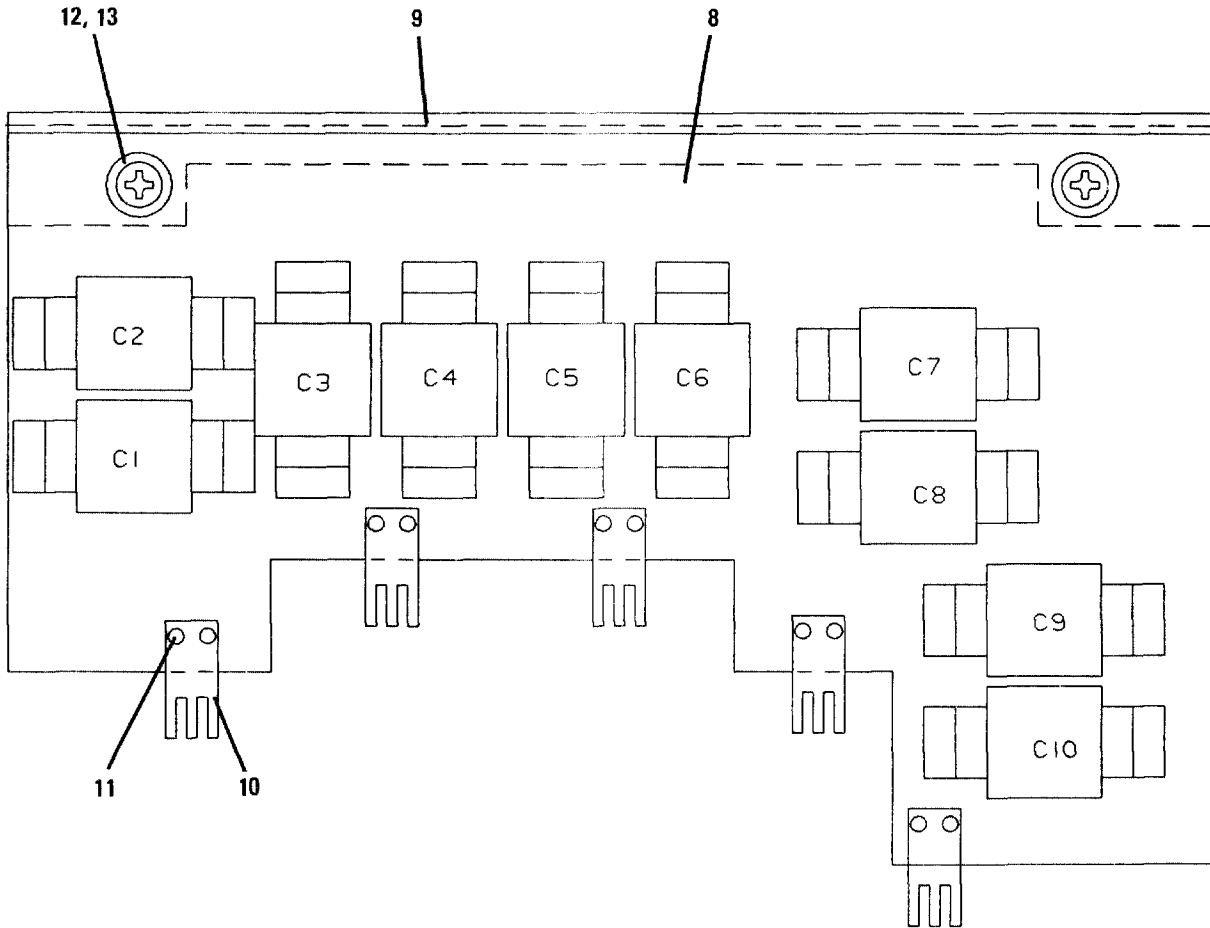
353-049

Figure 7-9. Tune Capacitor No. 2 Assy, A2A2

NOTE

To find index numbers for circuit board components, use the reference designator index at the end of this chapter. The complete reference designator for a circuit board component consists of "1," followed by the assembly designator (A1, A2, etc.), then the reference designator on the illustration. For example, the complete reference designator for R25 on the Front Panel PWB Assy is 1A7A1 R25.

Figure & Index Number	Part Number	FSCM	Description	Units Per Assy	Usable On Code	SMR Code
			1 2 3 4 5 6 7			
7-9 -	10087-3750	14304	TUNE CAP ASSY,A2A2	1		PADLD
- 1	10087-3745	14304	. CIRCUIT CARD ASSY	1		PAOZZ
- 2	HT50V250JA	21052	. CAPACITOR,FXD,CER	5		PADZZ
- 3	HT50T050JA	21052	. CAPACITOR,FXD,CER	1		PADZZ
- 4	10087-3742	14304	. PLATE,MTG	1		XB
- 5	10087-3743	14304	. PLATE,MTG	4		XB
- 6	MS51957-27	96906	. SCREW,MACHINE (AP)	16		PADZZ
- 7	MS35333-71	96906	. WASHER,LOCK (AP)	28		PADZZ



353-050

Figure 7-10. Load Capacitor No. 1 Assy, A2A3

NOTE

To find index numbers for circuit board components, use the reference designator index at the end of this chapter. The complete reference designator for a circuit board component consists of "1," followed by the assembly designator (A1, A2, etc.), then the reference designator on the illustration. For example, the complete reference designator for R25 on the Front Panel PWB Assy is 1A7A1 R25.

Figure & Index Number	Part Number	FSCM	Description							Units Per Assy	Usable On Code	SMR Code
			1	2	3	4	5	6	7			
7-10-	10087-3760	14304	CIRCUIT CARD ASSY, A2A3							1		XB
- 1	UFP1-110J	73899	. CAPACITOR, FXD, CER							2		PADZZ
- 2	UFP1-350J	73899	. CAPACITOR, FXD, CER							1		PADZZ
- 3	UFP1-340J	73899	. CAPACITOR, FXD, CER							3		PADZZ
- 4	755017A4514-1	14304	. CAPACITOR, FXD, CER							1		PADZZ
- 5	UFP1-100J	73899	. CAPACITOR, FXD, CER							1		PADZZ
- 6	C11-0004-029	14304	. CAPACITOR, FXD, CER							1		PADZZ
- 7	UFP1-290J	73899	. CAPACITOR, FXD, CER							1		PADZZ
- 8	10087-3769	14304	. CIRCUIT CARD							1		XB
- 9	10087-3762	14304	. BRACKET, MTG							1		XB
- 10	10087-3746	14304	. CONTACT, ELEC							10		XB
- 11	A1690	57771	. EYELET							10		XB
- 12	MS51957-14	96906	. SCREW, MACHINE (AP)							2		PADZZ
- 13	MS35333-70	96906	. WASHER, LOCK (AP)							2		PAOZZ

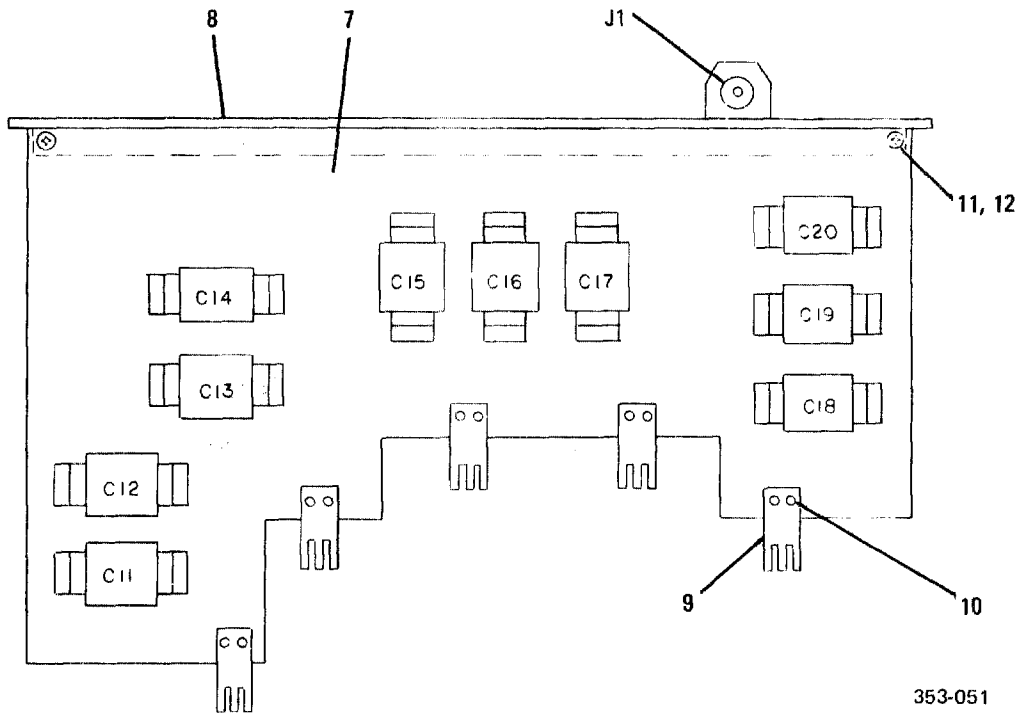
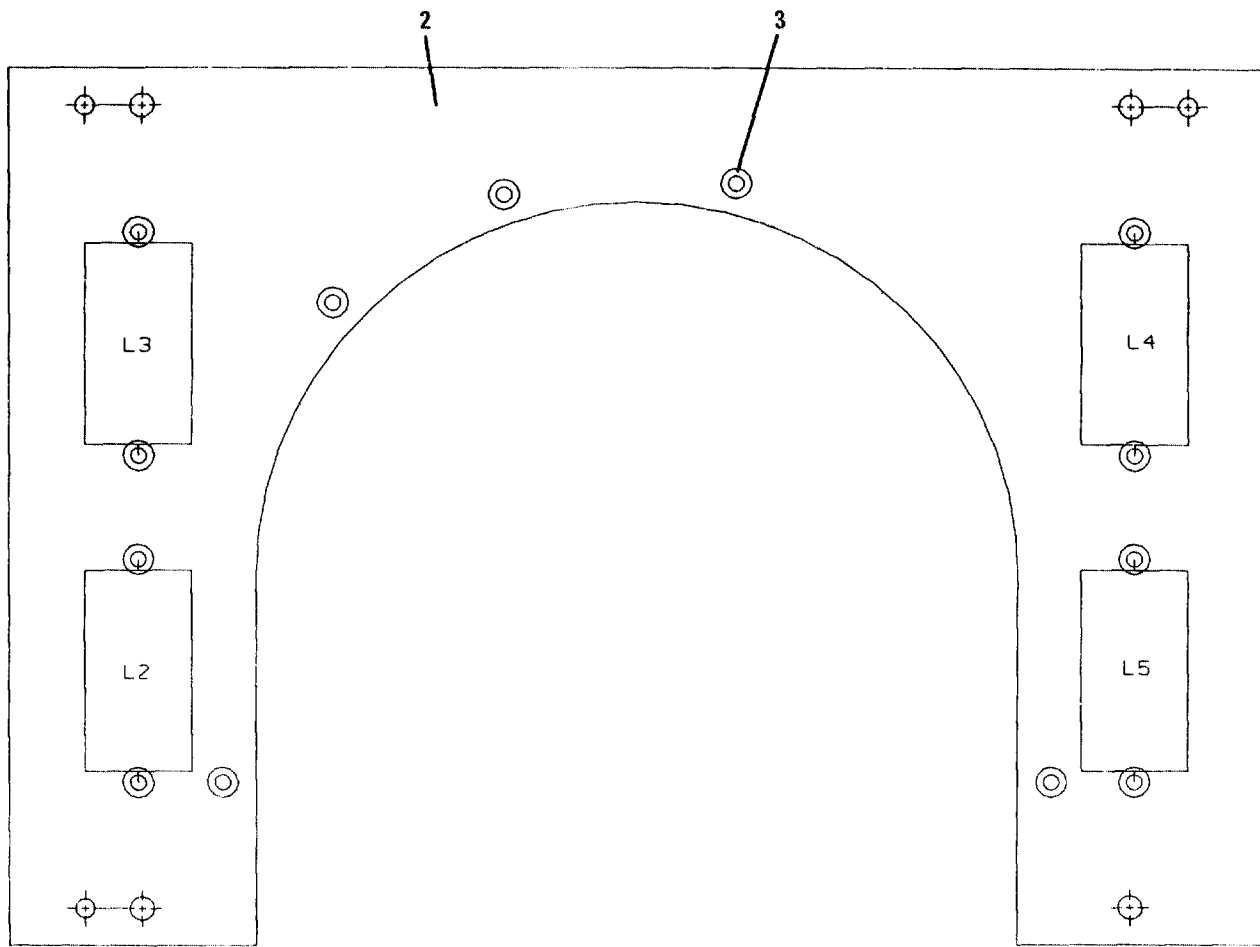


Figure 7-11. Load Capacitor No. 2 Assy, A2A4

NOTE

To find index numbers for circuit board components, use the reference designator index at the end of this chapter. The complete reference designator for a circuit board component consists of "1," followed by the assembly designator (A1, A2, etc.), then the reference designator on the illustration. For example, the complete reference designator for R25 on the Front Panel PWB Assy is 1A7A1 R25.

Figure & Index Number	Part Number	FSCM	Description 1 2 3 4 5 6 7	Units	Usable	SMR Code
				Per Assy	On Code	
7-11-	10087-3770	14304	CIRCUIT CARD ASSY,A2A4	1		XB
- 1	UFP1-320J	73899	. CAPACITOR,FXD,CER	4		PADZZ
- 2	UFP1-680J	73899	. CAPACITOR FXD,CER	2		PADZZ
- 3	UFP1-470J	73899	. CAPACITOR FXD CER	1		PADZZ
- 4	C11-0004-037	14304	. CAPACITOR,FXD,CER	2		PADZZ
- 5	UFP1-370J	73899	. CAPACITOR,FXD,CER	1		PADZZ
- 6	M39012/21-0003	81349	. CONNECTOR,RCPT,ELEC	1		PADZZ
- 7	10087-3769	14304	. CIRCUIT CARD	1		XA
- 8	10087-3772	14304	. BRACKET,MTG	1		XB
- 9	10087-3746	14304	. CONTACT,ELEC	10		PADZZ
- 10	A1690	57771	. EYELET	10		PADZZ
- 11	MS51957-14	96906	. SCREW,MACHINE (AP)	2		PADZZ
- 12	MS35333-70	96906	. WASHER,LOCK (AP)	2		PADZZ



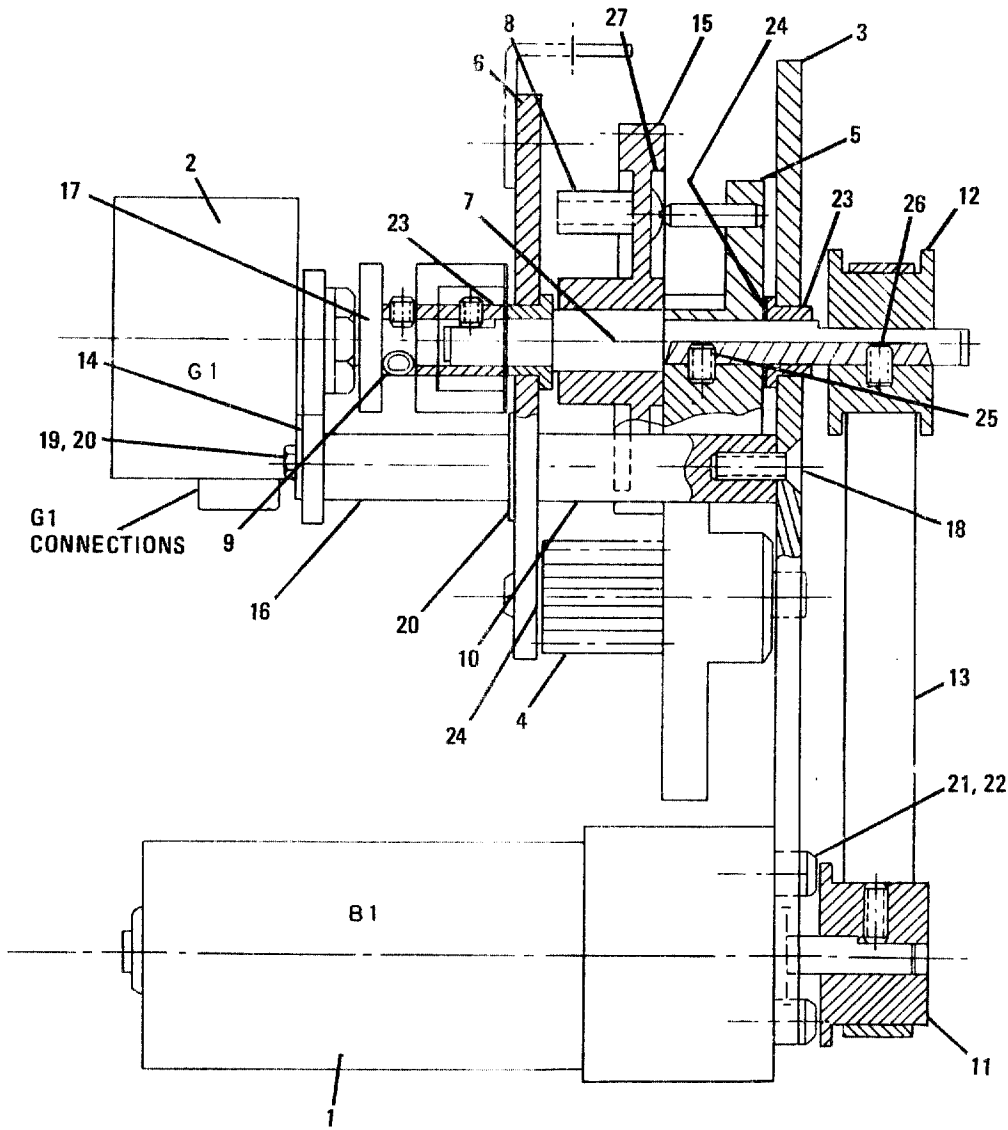
353-052

Figure 7-12. Coil PWB Assy, A2A5

NOTE

To find index numbers for circuit board components, use the reference designator index at the end of this chapter. The complete reference designator for a circuit board component consists of "1," followed by the assembly designator (A1, A2, etc.), then the reference designator on the illustration. For example, the complete reference designator for R25 on the Front Panel PWB Assy is 1A7A1 R25.

Figure & Index Number	Part Number	FSCM	Description							Units Per Assy	Usable On Code	SMR Code
			1	2	3	4	5	6	7			
7-12-	10087-3780	14304	CIRCUIT CARD ASSY, A2A5							1		XB
- 1	10087-3784	14304	. TRANSFORMER, RF							4		PADZZ
- 2	10087-3789	14304	. CIRCUIT CARD							1		XB
- 3	10087-3783	14304	. EYELET							13		XB



355-052

Figure 7-13. Coil Drive Assy, A2A6

NOTE

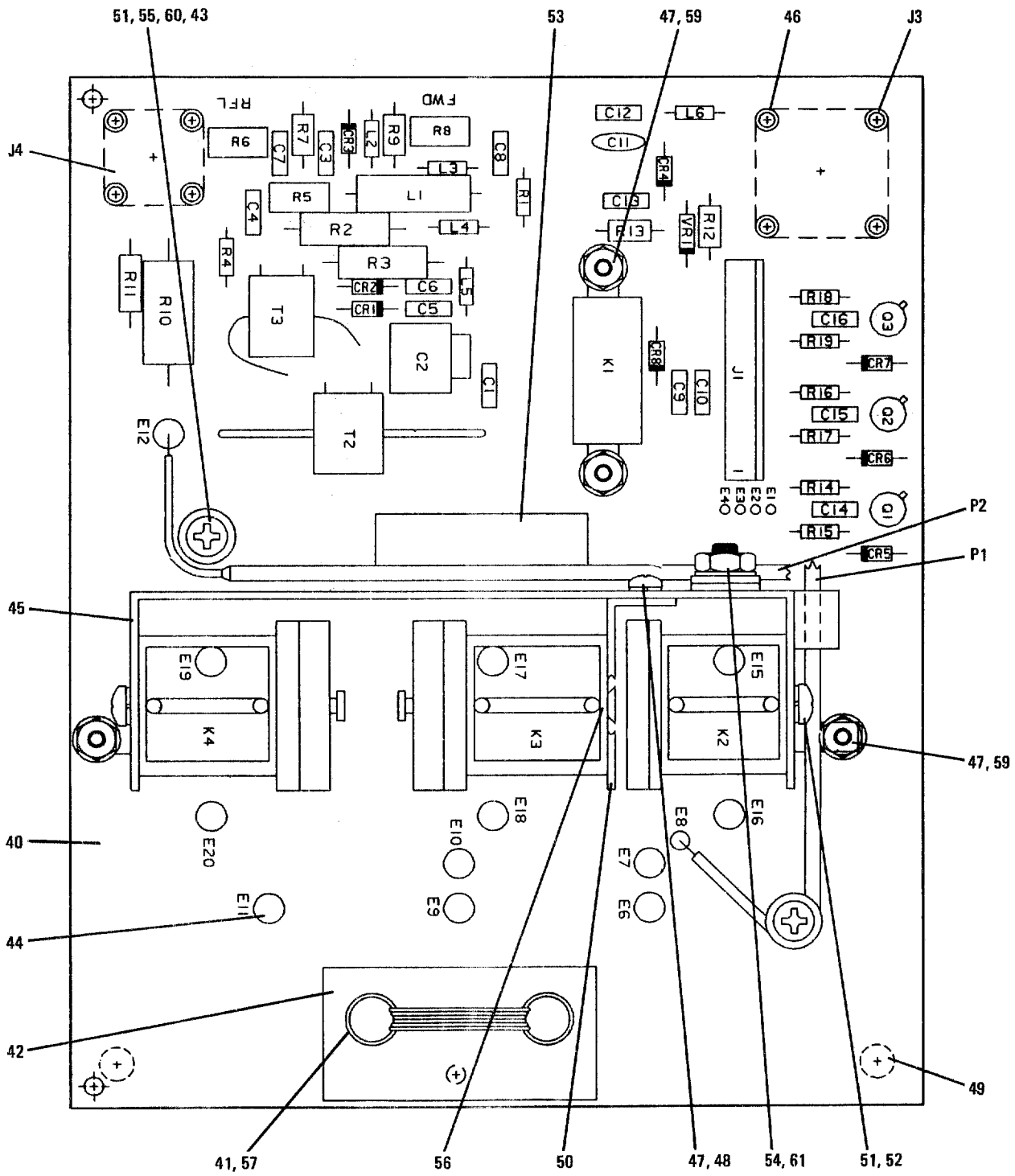
To find index numbers for circuit board components, use the reference designator index at the end of this chapter. The complete reference designator for a circuit board component consists of "1," followed by the assembly designator (A1, A2, etc.), then the reference designator on the illustration. For example, the complete reference designator for R25 on the Front Panel PWB Assy is 1A7A1 R25.

Figure & Index Number	Part Number	FSCM	Description							Units Per Assy	Usable On Code	SMR Code
			1	2	3	4	5	6	7			
7-13-	10J8-3720	14304	XFMR DRIVE ASSY,A2A6							1		XA
- 1	10086-3703	14304	. MOTOR,ELEC							1		PADZZ
- 2	10086-3787	14304	. ENCODER							1		XB
- 3	10086-3721	14304	. BRACKET,MTG							1		XB
- 4	10086-3722	14304	. WHEEL,INDEX							1		XB
- 5	10086-3723	14304	. WHEEL,DRIVE							1		XB
- 6	10086-3724	14304	. BRACKET,END							1		XB
- 7	10086-3725	14304	. SHAFT,DRIVE							1		XB
- 8	8154-A-0440-0	06540	. SPACER							1		XB
- 9	FB-46-2	71041	. BEARING							2		XB
- 10	9817-A-0832-16	06540	. SPACER							2		XB
- 11	10086-3709	14304	. PULLEY							1		XB
- 12	6A3-12H3706	14519	. PULLEY							1		XB
- 13	90KL037	61463	. BELT,DRIVE,CONT							1		PADZZ
- 14	10086-3727	14304	. BRACKET,MTG							1		XB
- 15	10086-3719	14304	. GEAR							1		XB
- 16	8519-A-0832-16	06540	. SPACER							2		XB
- 17	Z06-0008-001	14304	. COUPLING							1		XB
- 18	MS51959-44	96906	. SCREW,MACHINE (AP)							2		PAOZZ
- 19	MS51957-44	96906	. SCREW,MACHINE (AP)							2		PAOZZ
- 20	MS35333-72	96906	. WASHER,LOCK (AP)							4		PAOZZ
- 21	MS51957-14	96906	. SCREW,MACHINE (AP)							3		PADZZ
- 22	MS35333-70	96906	. WASHER,LOCK (AP)							3		PADZZ
- 23	MS51021-22	96906	. SCREW,MACHINE (AP)							2		PAOZZ
- 24	5804-128-1	86928	. WASHER,SPRING							2		XB
- 25	MS51021-23	96906	. SCREW,MACHINE (AP)							2		PAOZZ
- 26	MS51021-32	96906	. SCREW,MACHINE (AP)							1		PAOZZ
- 27	MS51957-15	96906	. SCREW,MACHINE (AP)							1		PAOZZ

NOTE

To find index numbers for circuit board components, use the reference designator index at the end of this chapter. The complete reference designator for a circuit board component consists of "1," followed by the assembly designator (A1, A2, etc.), then the reference designator on the illustration. For example, the complete reference designator for R25 on the Front Panel PWB Assy is 1A7A1 R25.

Figure & Index Number	Part Number	FSCM	Description							Unlts Per Assy	Usable On Code	SMR Code
			1	2	3	4	5	6	7			
7-14-	10086-3730	14304	CIRCUIT CARD ASSY, A2A7							1		XB
- 1	M39014/02-1332	81349	. CAPACITOR, FXD, CER							1		PADZZ
- 2	CK06BX472K	81349	. CAPACITOR, FXD, CER							1		PADZZ
- 3	CK06BX103K	81349	. CAPACITOR, FXD, CER							21		PADZZ
- 4	801591-31	96214	. CAP, FXD, ELCTLT							1		PADZZ
- 5	672D686H025CD5C	56289	. CAP, FXD, ELCTLT							1		PADZZ
- 6	JAN1N4454	81349	. SEMICONV DEVICE, DIO							16		PADZZ
- 7	609-2627	59730	. CONNECTOR, RCPT, ELEC							1		PADZZ
- 8	609-1627	15912	. CONNECTOR, RCPT, ELEC							2		PADZZ
- 9	JAN2N2907A	81349	. TRANSISTOR							4		PADZZ
- 10	JAN2N6648	81349	. TRANSISTOR							3		PADZZ
- 11	JAN2N6383	81349	. TRANSISTOR							2		PADZZ
- 12	JAN2N2222A	81349	. TRANSISTOR							4		PADZZ
- 13	JAN2N2219A	81349	. TRANSISTOR							1		PADZZ
- 14	CF07-103J	78488	. RESISTOR, FXD, COMP							10		PADZZ
- 15	CF07-472J	78488	. RESISTOR, FXD, COMP							12		PADZZ
- 16	CF07-102J	78488	. RESISTOR, FXD, COMP							7		PADZZ
- 17	CF07-270J	78488	. RESISTOR, FXD, COMP							1		PADZZ
- 18	CF07-183J	78488	. RESISTOR, FXD, COMP							1		PADZZ
- 19	RCR32G470JS	81349	. RESISTOR, FXD, COMP							1		PADZZ
- 20	CF07-681J	78488	. RESISTOR, FXD, COMP							1		PADZZ
- 21	CF07-222J	78488	. RESISTOR, FXD, COMP							5		PADZZ
- 22	750-83-R4.7K	11236	. RESISTOR							2		PADZZ
- 23	MC14028BBEBS	04713	. MICROCIRCUIT							1		PADZZ
- 24	JAN1N752A	81349	. SEMICONV DEVICE, DIO							1		PADZZ
- 25	10086-3739	14304	. CIRCUIT CARD							1		XB
- 26	MS51957-28	96906	. SCREW, MACHINE (AP)							10		PAOZZ
- 27	H-6768	14304	. NUT, CLINCH (AP)							10		XB
- 28	6611-0135	14304	. RETAINER, SCREW							2		PADZZ
- 29	10085-5156	14304	. BUSHING							2		PADZZ
- 30	65499-105	22526	. JACK, TIP							4		PADZZ
- 31	MS51957-17	96906	. SCREW, MACHINE (AP)							2		PADZZ
- 32	MS35338-135	96906	. WASHER, LOCK (AP)							2		PADZZ



353-053

Figure 7-15. VSQR/XFMR PWB Assy, A3

NOTE

To find index numbers for circuit board components, use the reference designator index at the end of this chapter. The complete reference designator for a circuit board component consists of "1," followed by the assembly designator (A1, A2, etc.), then the reference designator on the illustration. For example, the complete reference designator for R25 on the Front Panel PWB Assy is 1A7A1 R25.

Figure & Index Number	Part Number	FSCM	Description							Unlts Per Assy	Usable On Code	SMR Code
			1	2	3	4	5	6	7			
7-15-	10087-4600	14304	CIRCUIT CARD ASSY,A3							1		PAODD
- 1	C-11-NP0-5	56289	. CAPACITOR,FXD,CER							1		PADZZ
- 2	MCM01-007EC621G0	61306	. CAPACITOR,FXD,MICA							1		PADZZ
- 3	CK06BX103K	81349	. CAPACITOR,FXD,CER							6		PADZZ
- 4	M39014/02-1337	81349	. CAPACITOR,FXD,CER							1		PADZZ
- 5	M39014/01-1351	81349	. CAPACITOR,FXD,CER							2		PADZZ
- 6	CK05BX471K	81349	. CAPACITOR,FXD,CER							2		PADZZ
- 7	CMR05C100D0DR	81349	. CAPACITOR,FXD,MICA							1		PADZZ
- 8	CMR05E750G0DR	81349	. CAPACITOR,FXD,MICA							1		PADZZ
- 9	CK06BX104K	81349	. CAPACITOR,FXD,CER							1		PADZZ
- 10	JAN1N5711	81349	. SEMICOND DEVICE,DIO							4		PADZZ
- 11	JAN1N3611	81349	. SEMICOND DEVICE,DIO							4		PADZZ
- 12	22-11-2142	27264	. CONNECTOR,RCPT,ELEC							1		PADZZ
- 13	M39012/04-0002	81349	. CONNECTOR,RCPT,ELEC							1		PADZZ
- 14	KC-79-123	91836	. CONNECTOR,RCPT,ELEC							1		PADZZ
- 15	2T-4603-1	02289	. RELAY							1		PADZZ
- 16	W88KDX-2	94696	. RELAY							2		PADZZ
- 17	W88UKDX-2	94696	. RELAY							1		PADZZ
- 18	MS90541-05	96906	. COIL,RF							1		PADZZ
- 19	MS75085-7	96906	. COIL,RF							2		PADZZ
- 20	MS75083-1	96906	. COIL,RF							2		PADZZ
- 21	MS75085-17	96906	. COIL,RF							1		PADZZ
- 22	M39012/16-007	80131	. CONNECTOR,RCPT,ELEC							2		PADZZ
- 23	JAN2N2907A	81349	. TRANSISTOR							3		PADZZ
- 24	CF07-103J	78488	. RESISTOR,FXD,COMP							4		PADZZ
- 25	RLR32C56R2FS	81349	. RESISTOR,FXD,FILM							1		PADZZ
- 26	RLR32C56R0FM	81349	. RESISTOR,FXD,FILM							1		PADZZ
- 27	CF07-221J	78488	. RESISTOR,FXD,COMP							1		PADZZ
- 28	3386B-1-202	32997	. RESISTOR,VARIABLE							1		PADZZ
- 29	3386B-1-203	32997	. RESISTOR,VARIABLE							2		PADZZ
- 30	RNC55K1152FS	81349	. RESISTOR,FXD,FILM							1		PADZZ
- 31	RN55D1152F	81349	. RESISTOR,FXD,FILM							1		PADZZ
- 32	RCR42G104JS	81349	. RESISTOR,FXD,COMP							1		PADZZ
- 33	ERD50TJ510	54473	. RESISTOR,FXD,COMP							1		PADZZ
- 34	RNC55K6811FS	81349	. RESISTOR,FXD,FILM							1		PADZZ
- 35	RNC55K3011FS	81349	. RESISTOR,FXD,FILM							1		PADZZ
- 36	CF07-102J	78488	. RESISTOR,FXD,COMP							3		PADZZ
- 37	10087-4614	14304	. TRANSFORMER,RF							6		PADZZ
- 38	10086-4520	14304	. TRANSFORMER,RF							2		PADZZ
- 39	JAN1N750A	81349	. SEMICOND DEVICE,DIO							1		PADZZ
- 40	10087-4609	14304	. CIRCUIT CARD							1		XB
- 41	10087-4611	14304	. TUBING,BRASS							2		XB
- 42	10087-4619	14304	. PLATE							1		XB
- 43	226619-3	00779	. TERMINAL							2		PADZZ
- 44	10087-4613	14304	. EYELET							12		XB

Figure & Index Number	Part Number	FSCM	Description							Units Per Assy	Usable On Code	SMR Code
			1	2	3	4	5	6	7			
- 45	10087-4624	14304	.	BRACKET, MTG						1		XB
- 46	18099C-B044014A	06540	.	SPACER						8		XB
- 47	MS51957-14	96906	.	SCREW, MACHINE (AP)						10		PADZZ
- 48	MS35338-135	96906	.	WASHER, LOCK (AP)						6		PADZZ
- 49	18100C-B-0440	06540	.	SPACER						2		XB
- 50	10087-4626	14304	.	BRACKET, MTG						1		XB
- 51	MS51957-27	96906	.	SCREW, MACHINE (AP)						4		PADZZ
- 52	MS35338-136	96906	.	WASHER, LOCK (AP)						2		PADZZ
- 53	10087-4608	14304	.	CONTACT, ELEC						1		XB
- 54	MS25281R-3	96906	.	CLAMP, LOOP						2		PADZZ
- 55	MS35333-71	96906	.	WASHER, LOCK (AP)						2		PADZZ
- 56	MS24693-C26	96906	.	SCREW, MACHINE (AP)						1		PADZZ
- 57	MS35489-1	96906	.	GROMMET						2		PADZZ
- 58	MS3367-4-9	96906	.	STRAP, TIE DOWN						3		PADZZ
- 59	841-00	92967	.	NUT, CLINCH (AP)						4		PADZZ
- 60	H-6768	14304	.	NUT, CLINCH (AP)						2		XB
- 61	H-6767	14304	.	NUT, CLINCH (AP)						2		XB

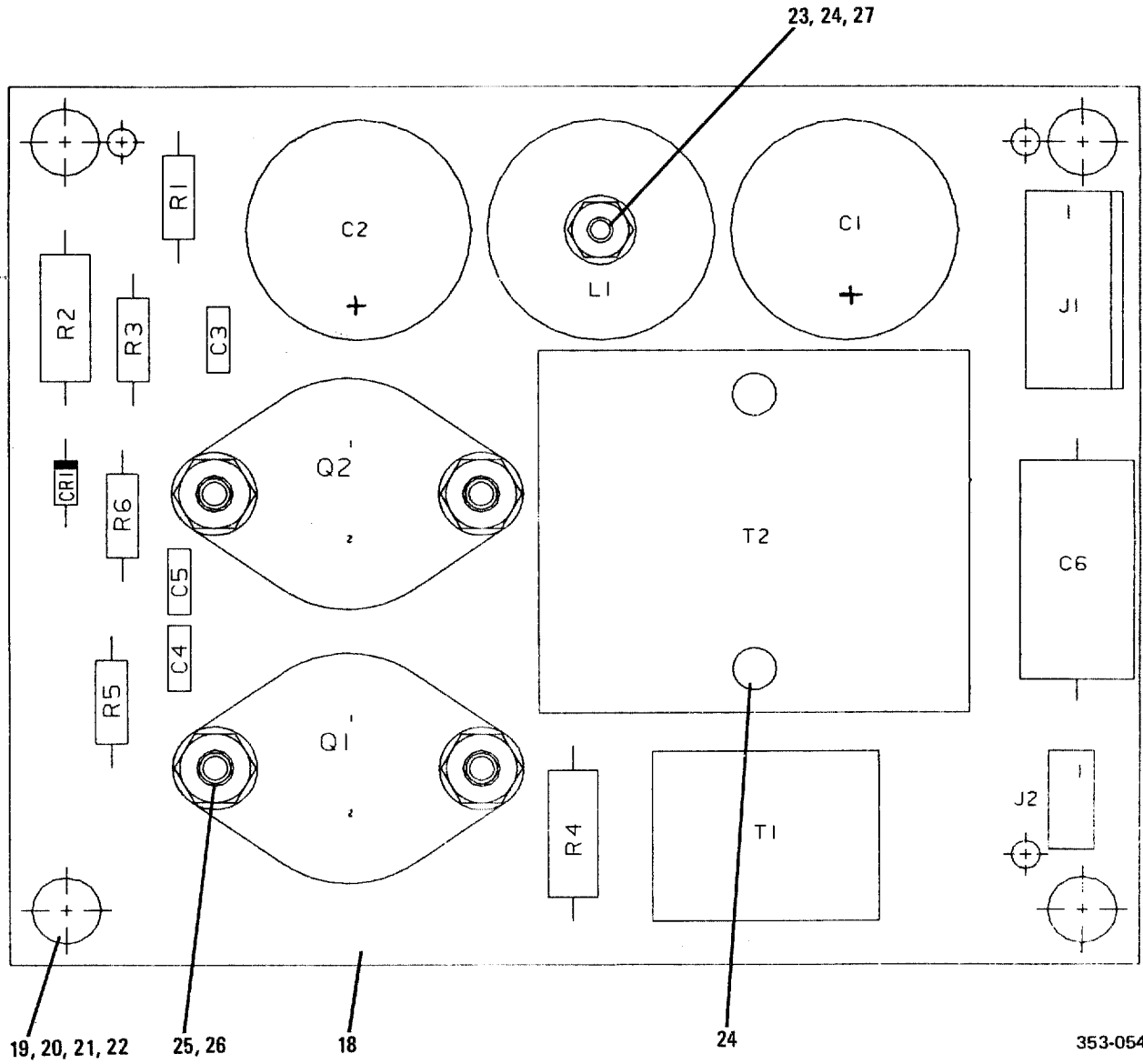


Figure 7-16. Fan Inverter PWB Assy, A4

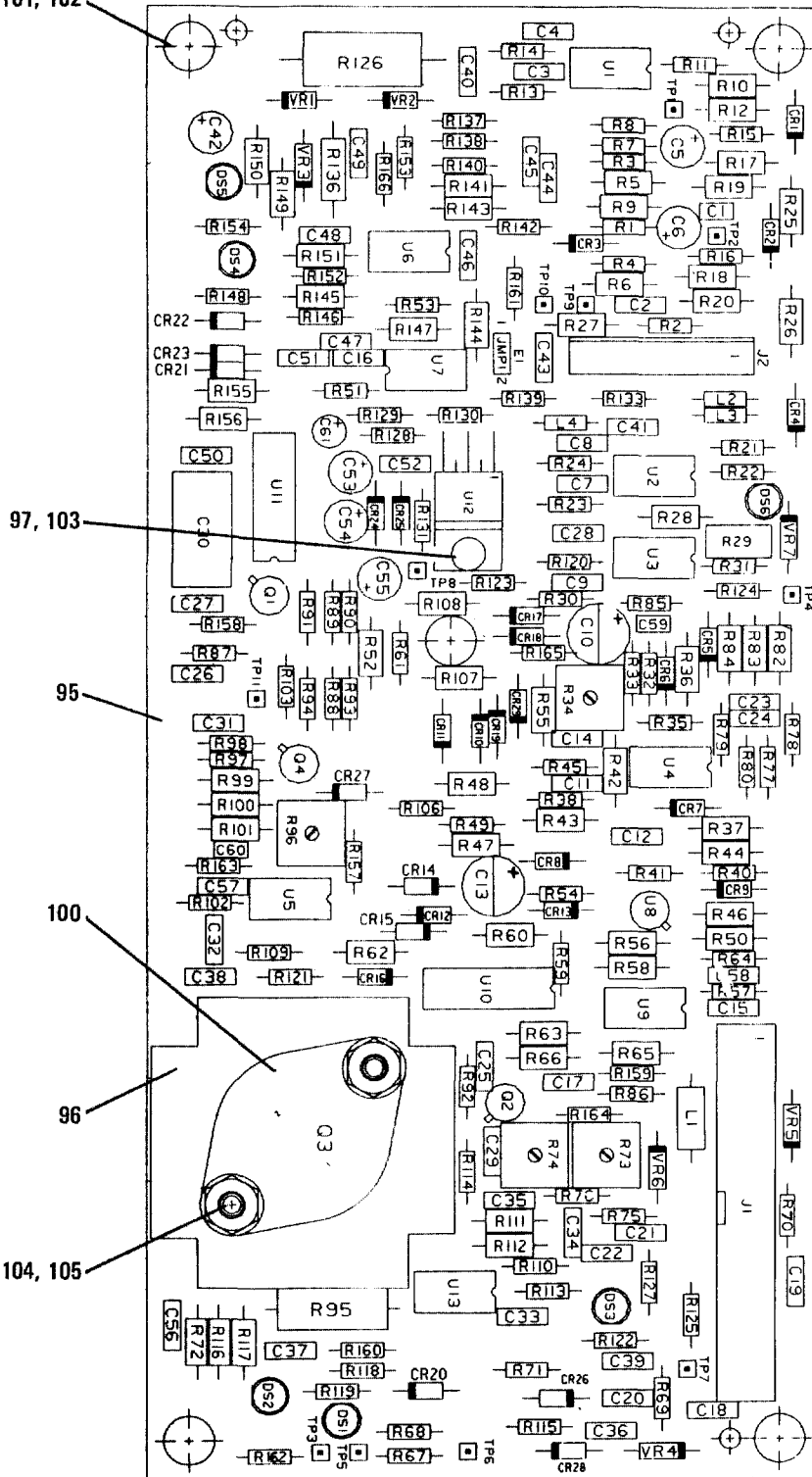
NOTE

To find index numbers for circuit board components, use the reference designator index at the end of this chapter. The complete reference designator for a circuit board component consists of "1," followed by the assembly designator (A1, A2, etc.), then the reference designator on the illustration. For example, the complete reference designator for R25 on the Front Panel PWB Assy is 1A7A1 R25.

Figure & Index Number	Part Number	FSCM	Description							Units Per Assy	Usable On Code	SMR Code
			1	2	3	4	5	6	7			
7-16-	10087-1500	14304	CIRCUIT CARD ASSY,A4							1		PAOLD
- 1	674D128H025JE5A	56289	. CAP,FXD,ELCTLT							2		PADZZ
- 2	CK06BX104K	81349	. CAPACITOR,FXD,CER							1		PADZZ
- 3	M39014/02-1360	81349	. CAPACITOR,FXD,CER							1		PADZZ
- 4	CK06BX474K	81349	. CAPACITOR,FXD,CER							1		PADZZ
- 5	439P4749220	56289	. CAPACITOR,FXD,FILM							1		PADZZ
- 6	JAN1N3611	81349	. SEMICOND DEVICE,DIO							1		PADZZ
- 7	09-65-1061	27264	. CONNECTOR,RCPT,ELEC							1		PADZZ
- 8	3-102202-4	00779	. CONNECTOR,RCPT,ELEC							1		PADZZ
- 9	L13-0001-101	14304	. COIL,RF							1		PADZZ
- 10	2N5881	80131	. TRANSISTOR							2		PADZZ
- 11	ERD50TJ182	54473	. RESISTOR,FXD,COMP							1		PADZZ
- 12	RCR32G2R7JS	81349	. RESISTOR,FXD,COMP							1		PADZZ
- 13	ERD50TJ101	54473	. RESISTOR,FXD,COMP							1		PADZZ
- 14	RCR32G100JS	81349	. RESISTOR,FXD,COMP							1		PADZZ
- 15	ERD50TJ3R9	54473	. RESISTOR,FXD,COMP							2		PADZZ
- 16	10086-1516	14304	. TRANSFORMER,RF							1		PADZZ
- 17	10086-1519	14304	. TRANSFORMER,RF							1		PADZZ
- 18	10087-1509	14304	. CIRCUIT CARD							1		XB
- 19	6611-0135	14304	. RETAINER,SCREW							4		PADZZ
- 20	10085-5156	14304	. BUSHING							4		PADZZ
- 21	MS51957-17	96906	. SCREW,MACHINE (AP)							4		PADZZ
- 22	MS35338-135	96906	. WASHER,LOCK (AP)							4		PADZZ
- 23	MS51957-122	96906	. SCREW,MACHINE (AP)							1		PAOZZ
- 24	841-00	92967	. NUT,CLINCH (AP)							3		PADZZ
- 25	MS51957-28	96906	. SCREW,MACHINE (AP)							4		PADZZ
- 26	H-6768	14304	. NUT,CLINCH (AP)							4		XB
- 27	MS15795-804	96906	. WASHER,FLAT (AP)							1		PAOZZ



98, 99, 101, 102



355-055

Figure 7-17. Power Control PWB Assy, A5

NOTE

To find index numbers for circuit board components, use the reference designator index at the end of this chapter. The complete reference designator for a circuit board component consists of "1," followed by the assembly designator (A1, A2, etc.), then the reference designator on the illustration. For example, the complete reference designator for R25 on the Front Panel PWB Assy is 1A7A1 R25.

Figure & Index Number	Part Number	FSCM	Description							Units Per Assy	Usable On Code	SMR Code
			1	2	3	4	5	6	7			
7-17-	10086-7100	14304	CIRCUIT CARD ASSY, A5							1		PA0DD
- 1	CK05BX471K	81349	. CAPACITOR, FXD, CER							2		PADZZ
- 2	CK06BX103K	81349	. CAPACITOR, FXD, CER							40		PADZZ
- 3	T392C105K050AS	31433	. CAP, FXD, ELCTLT							1		PADZZ
- 4	T392C105M050AS	31433	. CAP, FXD, ELCTLT							1		PADZZ
- 5	T392F157M016AS	31433	. CAP, FXD, ELCTLT							2		PADZZ
- 6	CK06BX104K	81349	. CAPACITOR, FXD, CER							7		PADZZ
- 7	C280MAH/A1M	25403	. CAPACITOR, FXD, FILM							1		PADZZ
- 8	T392C106M025AS	31433	. CAP, FXD, ELCTLT							4		PADZZ
- 9	M39014/01-1321	81349	. CAPACITOR, FXD, CER							1		PADZZ
- 10	M39014/01-1357	81349	. CAPACITOR, FXD, CER							1		PADZZ
- 11	T392B685K016AS	31433	. CAP, FXD, ELCTLT							1		PADZZ
- 12	JAN1N5711	81349	. SEMICOND DEVICE, DIO							3		PADZZ
- 13	JAN1N4454	81349	. SEMICOND DEVICE DIO							22		PADZZ
- 14	JAN1N3611	81349	. SEMICOND DEVICE, DIO							4		PADZZ
- 15	5082-4955	01295	. LED							1		PADZZ
- 16	5082-4555	01295	. LED							2		PADZZ
- 17	5082-4655	01295	. LED							3		PADZZ
- 18	65499-102	22526	. CONNECTOR, RCPT, ELEC							1		PADZZ
- 19	609-4027	59730	. CONNECTOR, RCPT, ELEC							1		PADZZ
- 20	22-11-2102	27264	. CONNECTOR, RCPT, ELEC							1		PADZZ
- 21	3720046010	13499	. CONN PLUG ELECTRICA							1		PADZZ
- 22	MS14046-8	96906	. COIL, RF							1		PADZZ
- 23	MS75085-19	96906	. COIL, RF							2		PADZZ
- 24	MS75084-3	81349	. COIL, RF							1		PADZZ
- 25	JAN2N2222A	81349	. TRANSISTOR							2		PADZZ
- 26	JAN2N2907A	81349	. TRANSISTOR							1		PADZZ
- 27	JAN2N6383	81349	. TRANSISTOR							1		PADZZ
- 28	CF07-100J	78488	. RESISTOR, FXD, COMP							37		PADZZ
- 29	CF07-222J	78488	. RESISTOR, FXD, COMP							9		PADZZ
- 30	RNC55K9762FS	81349	. RESISTOR, FXD, FILM							2		PADZZ
- 31	RN55D9762F	81349	. RESISTOR, FXD, FILM							1		PADZZ
- 32	CF07-103J	78488	. RESISTOR, FXD, COMP							20		PADZZ
- 33	RNC55K2613FS	81349	. RESISTOR, FXD, FILM							3		PADZZ
- 34	RNC55K4752FS	81349	. RESISTOR, FXD, FILM							4		PADZZ
- 35	CF07-273J	78488	. RESISTOR, FXD, COMP							1		PADZZ
- 36	RNC55K1823FS	81349	. RESISTOR, FXD, FILM							1		PADZZ
- 37	RNC55K3923FS	81349	. RESISTOR, FXD, FILM							1		PADZZ
- 38	RN55D2613F	81349	. RESISTOR, FXD, FILM							1		PADZZ
- 39	RNC55K9092FS	81349	. RESISTOR, FXD, FILM							2		PADZZ
- 40	CF07-104J	78488	. RESISTOR, FXD, COMP							2		PADZZ
- 41	CF07-683J	78488	. RESISTOR, FXD, COMP							1		PADZZ
- 42	RN55D4752F	81349	. RESISTOR, FXD, FILM							1		PADZZ
- 43	RNC55K4751FS	81349	. RESISTOR, FXD, FILM							1		PADZZ
- 44	RNC55K7502FS	81349	. RESISTOR, FXD, FILM							1		PADZZ

Figure & Index Number	Part Number	FSCM	Description							Units Per Assy	Usable On Code	SMR Code
			1	2	3	4	5	6	7			
- 45	3386B-1-203	32997	.	RESISTOR	,	VARIABLE				1		PADZZ
- 46	CF07-123J	78488	.	RESISTOR	,	FXD,COMP				1		PADZZ
- 47	CF07-223J	78488	.	RESISTOR	,	FXD,COMP				2		PADZZ
- 48	3386F-1-104	32997	.	RESISTOR	,	VARIABLE				1		PADZZ
- 49	CF07-101J	78488	.	RESISTOR	,	FXD,COMP				3		PADZZ
- 50	RN55D1002F	81349	.	RESISTOR	,	FXD, FILM				15		PADZZ
- 51	CF07-472J	78488	.	RESISTOR	,	FXD,COMP				2		PADZZ
- 52	CF07-105J	78488	.	RESISTOR	,	FXD,COMP				3		PADZZ
- 53	RN55D3923F	81349	.	RESISTOR	,	FXD, FILM				1		PADZZ
- 54	RNC55K7151FS	81349	.	RESISTOR	,	FXD, FILM				1		PADZZ
- 55	CF07-102J	78488	.	RESISTOR	,	FXD,COMP				7		PADZZ
- 56	RNC55K3322FS	81349	.	RESISTOR	,	FXD, FILM				4		PADZZ
- 57	CF07-153J	78488	.	RESISTOR	,	FXD,COMP				1		PADZZ
- 58	RN55D3322F	81349	.	RESISTOR	,	FXD, FILM				1		PADZZ
- 59	RNC55K2211FS	81349	.	RESISTOR	,	FXD, FILM				3		PADZZ
- 60	RN55D2211F	81349	.	RESISTOR	,	FXD, FILM				1		PADZZ
- 61	RNC55K4322FS	81349	.	RESISTOR	,	FXD, FILM				1		PADZZ
- 62	3386F-1-102	80294	.	RESISTOR	,	VARIABLE				2		PADZZ
- 63	CF07-471J	78488	.	RESISTOR	,	FXD,COMP				3		PADZZ
- 64	RNC55K6812FS	81349	.	RESISTOR	,	FXD,COMP				1		PADZZ
- 65	RN55D2554F	81349	.	RESISTOR	,	FXD, FILM				1		PADZZ
- 66	RN55D9092F	81349	.	RESISTOR	,	FXD, FILM				1		PADZZ
- 67	CF07-122J	78488	.	RESISTOR	,	FXD,COMP				1		PADZZ
- 68	CF07-562J	78488	.	RESISTOR	,	FXD,COMP				1		PADZZ
- 69	RWR89S1R00FS	81349	.	RESISTOR	,	FXD, WW				1		PADZZ
- 70	3386F-1-203	32997	.	RESISTOR	,	VARIABLE				1		PADZZ
- 71	RNC55K4321FS	81349	.	RESISTOR	,	FXD, FILM				1		PADZZ
- 72	RNC55K1501FS	81349	.	RESISTOR	,	FXD, FILM				1		PADZZ
- 73	RNC55K1303FS	81349	.	RESISTOR	,	FXD, FILM				1		PADZZ
- 74	RNC55K5621FS	81349	.	RESISTOR	,	FXD, FILM				2		PADZZ
- 75	RN55D1502F	81349	.	RESISTOR	,	FXD, FILM				1		PADZZ
- 76	RCR42G330JS	81349	.	RESISTOR	,	FXD,COMP				1		PADZZ
- 77	CF07-822J	78488	.	RESISTOR	,	FXD,COMP				1		PADZZ
- 78	CF07-333J	78488	.	RESISTOR	,	FXD,COMP				1		PADZZ
- 79	ERD50TJ151	54473	.	RESISTOR	,	FXD,COMP				1		PADZZ
- 80	CF07-682J	78488	.	RESISTOR	,	FXD,COMP				2		PADZZ
- 81	RNC55K2493FS	81349	.	RESISTOR	,	FXD, FILM				2		PADZZ
- 82	RNC55K3481FS	81349	.	RESISTOR	,	FXD, FILM				1		PADZZ
- 83	RN55D5621F	81349	.	RESISTOR	,	FXD, FILM				1		PADZZ
- 84	RN55D2491F	81349	.	RESISTOR	,	FXD, FILM				1		PADZZ
- 85	65499-101	22526	.	CONNECTOR	,	RCPT, ELEC				11		PADZZ
- 86	MC1558U	04713	.	MICROCIRCUIT						9		PADZZ
- 87	2N5566	80131	.	TRANSISTOR						1		PADZZ
- 88	SM-A-938092	80063	.	MICROCIRCUIT						1		PADZZ
- 89	CD40106BF/3	02735	.	MICROCIRCUIT						1		PADZZ
- 90	TDA2002H	04713	.	MICROCIRCUIT						1		PADZZ
- 91	JAN1N3825A	81349	.	SEMICOND DEVICE	,	DIO				1		PADZZ
- 92	1N4733A	80131	.	SEMICOND DEVICE	,	DIO				1		PADZZ
- 93	0.5M6.8AZ1	04713	.	SEMICOND DEVICE	,	DIO				1		PADZZ
- 94	JAN1N751A	81349	.	SEMICOND DEVICE	,	DIO				3		PADZZ
- 95	10086-7109	14304	.	CIRCUIT CARD						1		XA

Figure & Index Number	Part Number	FSCM	Description	Units Per Assy	Usable On Code	SMR Code
			1 2 3 4 5 6 7			
- 96	6051B	13103	. HEATSINK	1		XB
- 97	MS51957-14	96906	. SCREW, MACHINE	1		PADZZ
- 98	MS51957-17	96906	. SCREW MACHINE	5		PADZZ
- 99	MS35338-135	96906	. WASHER, LOCK	5		PADZZ
-100	56-03-2	13103	. INSULATOR PLATE	1		XB
-101	6611-0135	14304	. RETAINER SCREW	5		PADZZ
-102	10085-5156	14304	. BUSHING	5		PADZZ
-103	841-00	92967	. NUT, CLINCH	1		PADZZ
-104	H-6768	14304	. NUT PLAIN HEX	2		XB
-105	MS51957-29	96906	. SCREW, MACHINE	2		PADZZ

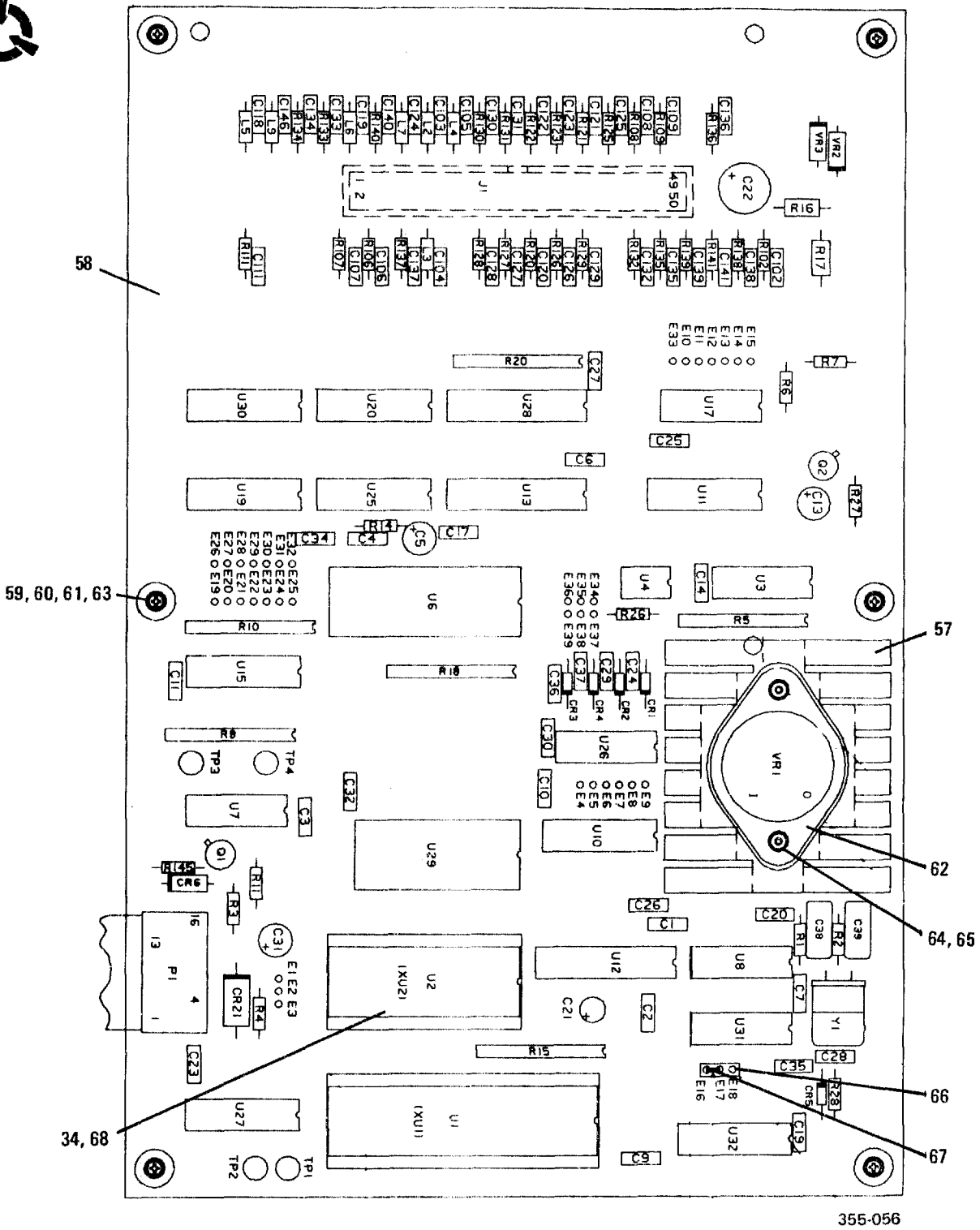


Figure 7-18. Micro Control PWB Assy, A6